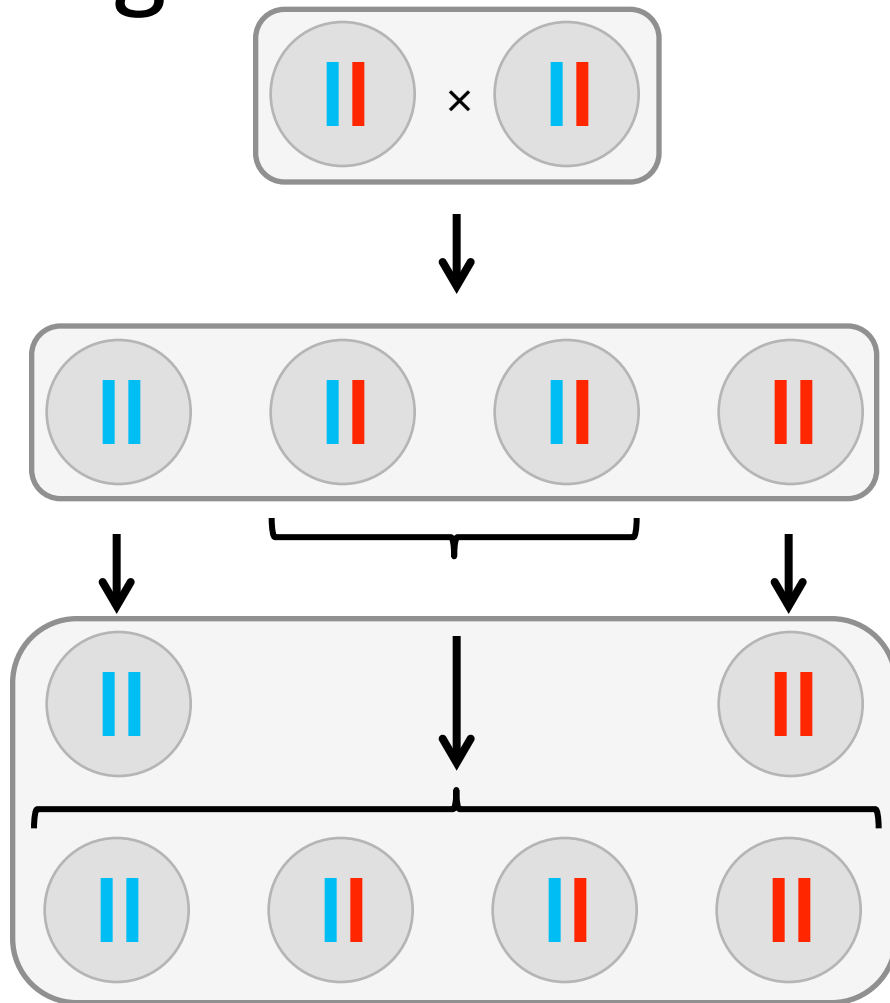


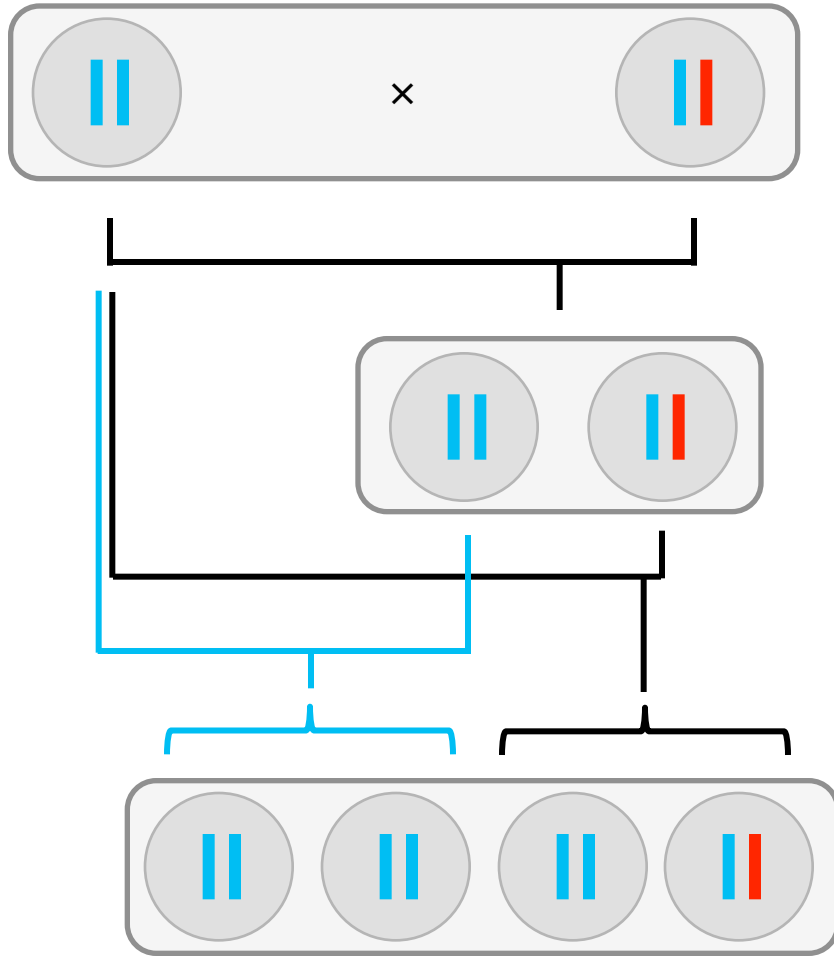
Inbreeding regimes and their effect on heterozygosity

Selfing



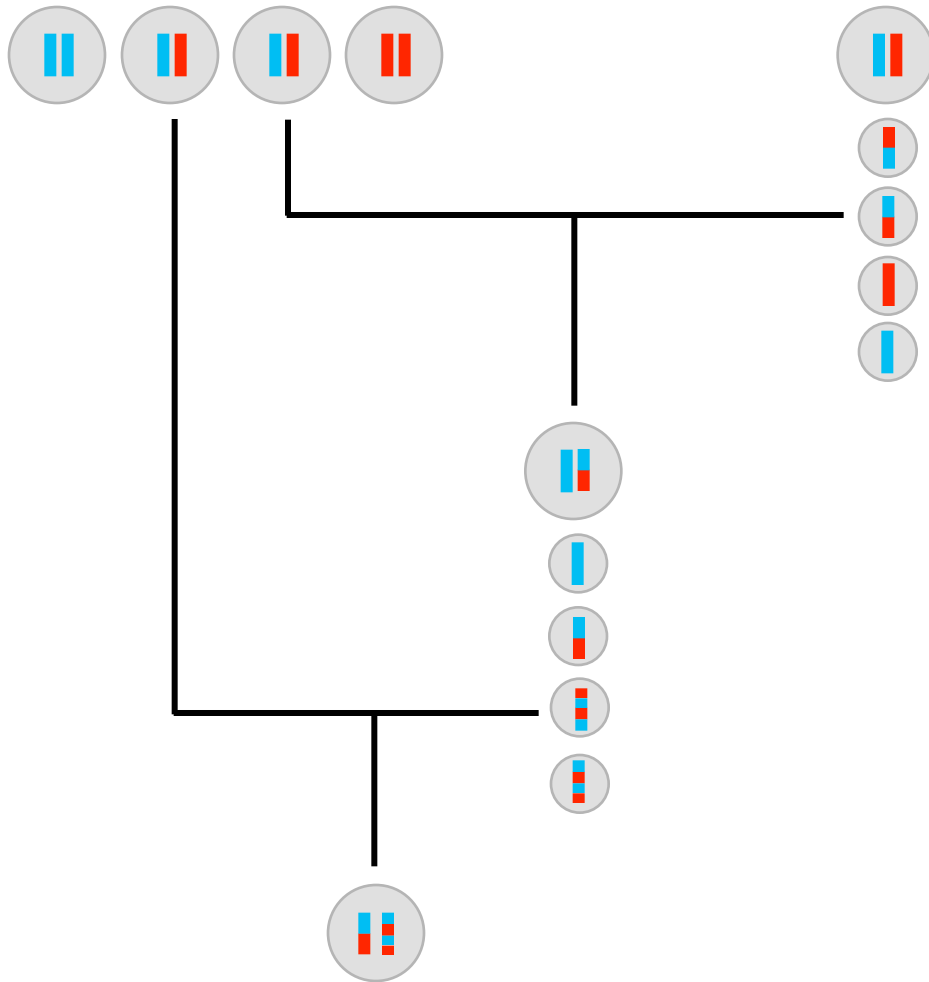
<i>g</i>	<i>H</i>	<i>F</i>
0	1	0
1	0.5	0.5
2	0.25	0.75
≈ 7	$\rightarrow 0$	$\rightarrow 1$

Backcross to inbred



g	H	F
0	0.5	0
1	0.5	0
2	0.25	0.5
≈ 8	$\rightarrow 0$	$\rightarrow 1$

Backcross to random



g	H	F
0	0.5	0
1	0.5	0
2	0.375	0.25
≈ 8	$\rightarrow 0.25$	$\rightarrow 0.5$