

Chemistry 283g Experiment 1.

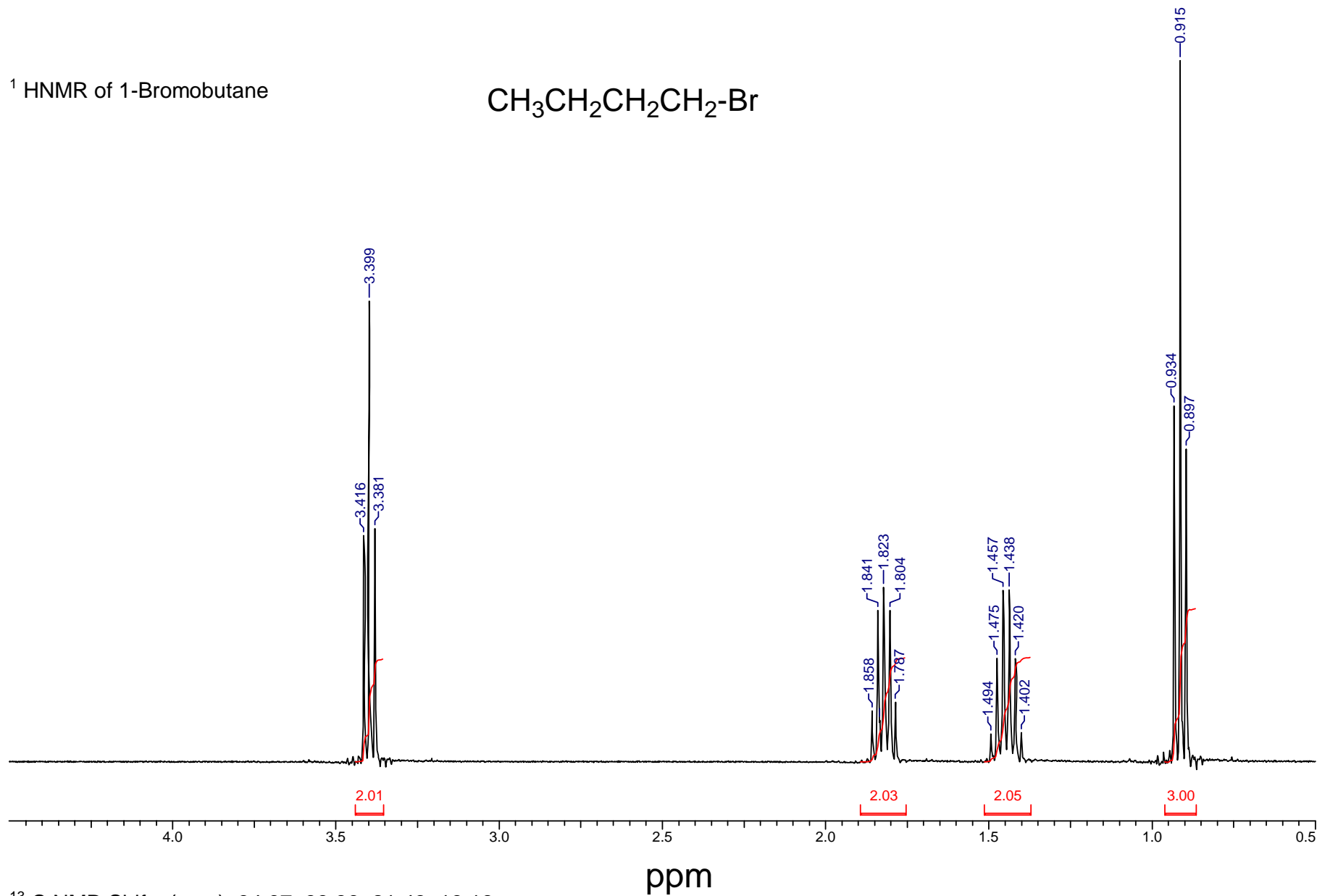
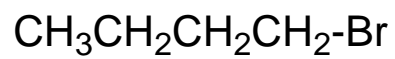
^1H NMR spectra of pure 1-butanol, 1-bromobutane and 2-bromobutane. Please note that the data for the corresponding ^{13}C spectra are listed at the bottom of each proton NMR spectrum.

A GC spectrum of a mixture of 1- and 2- bromobutanes is included to compare to your experimental data.

Assign the spectra.

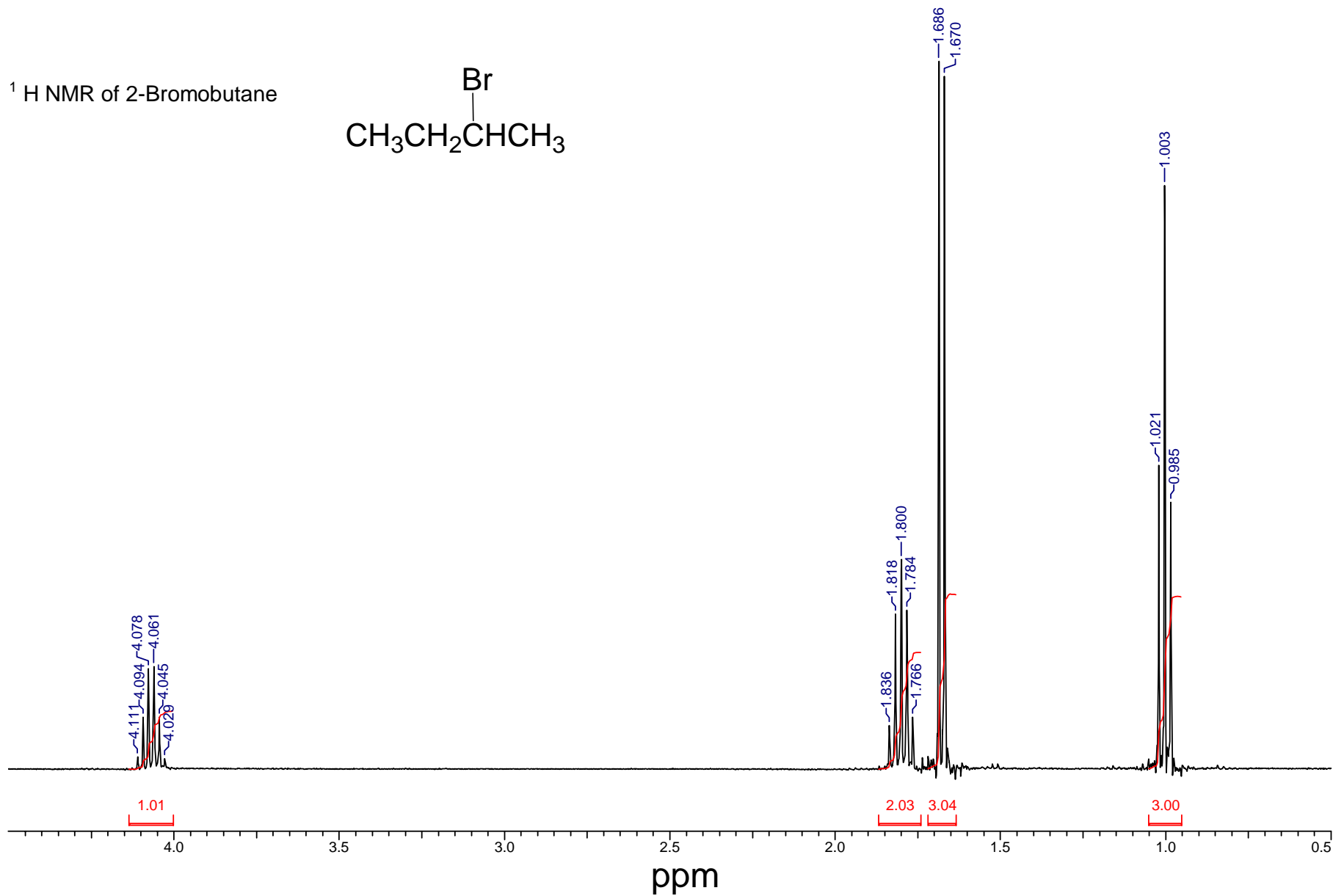
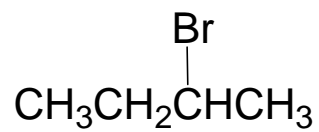
The spectra may also be useful when analyzing the NMR of your reaction product.

^1H NMR of 1-Bromobutane



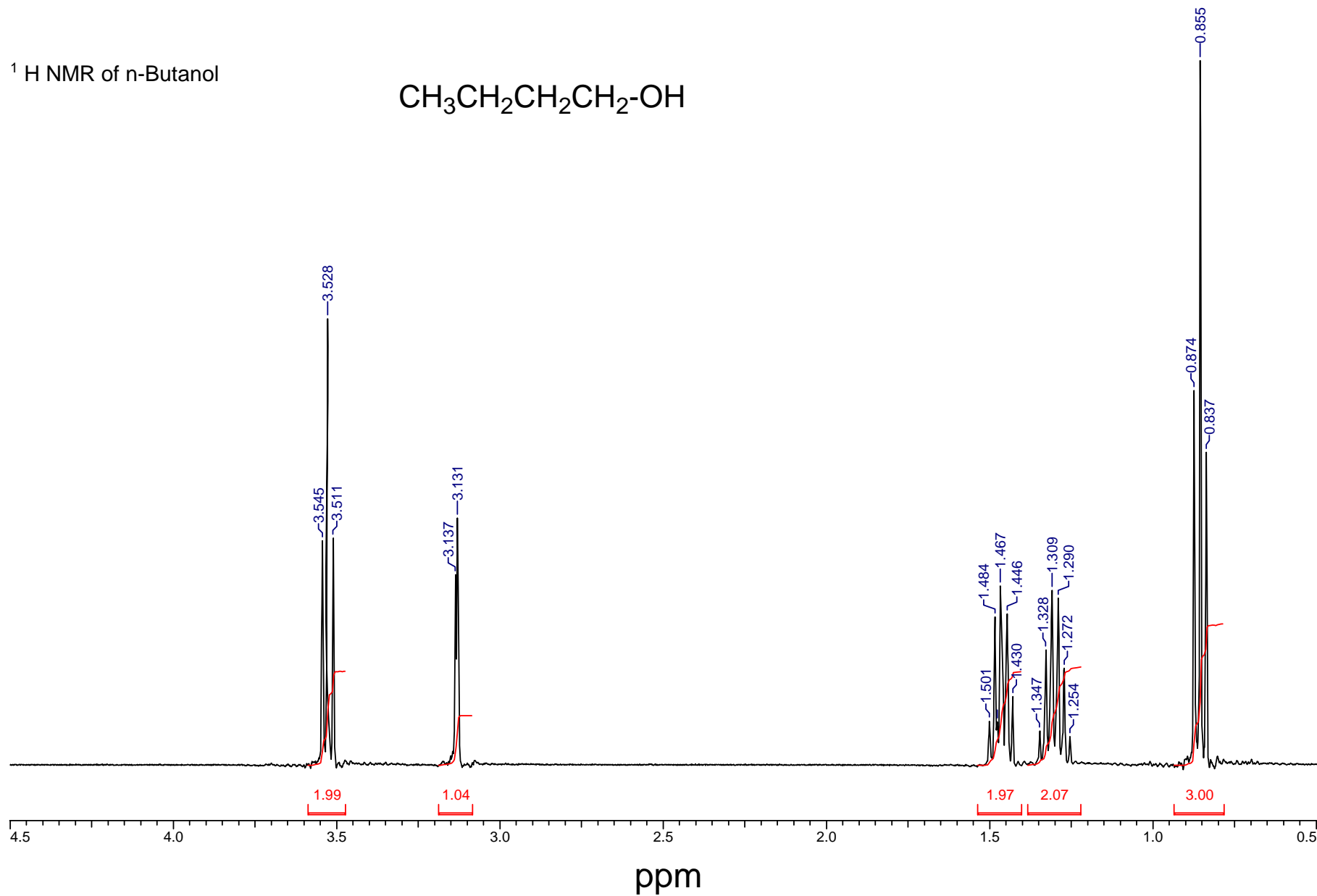
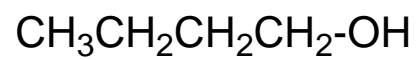
^{13}C NMR Shifts (ppm): 34.97, 33.36, 21.43, 13.18.

^1H NMR of 2-Bromobutane



^{13}C NMR Shifts (ppm): 53.35, 34.25, 26.06, 12.20.

^1H NMR of n-Butanol

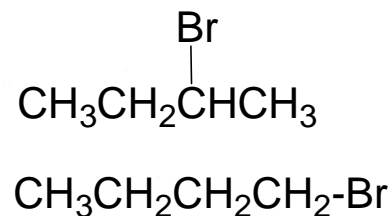
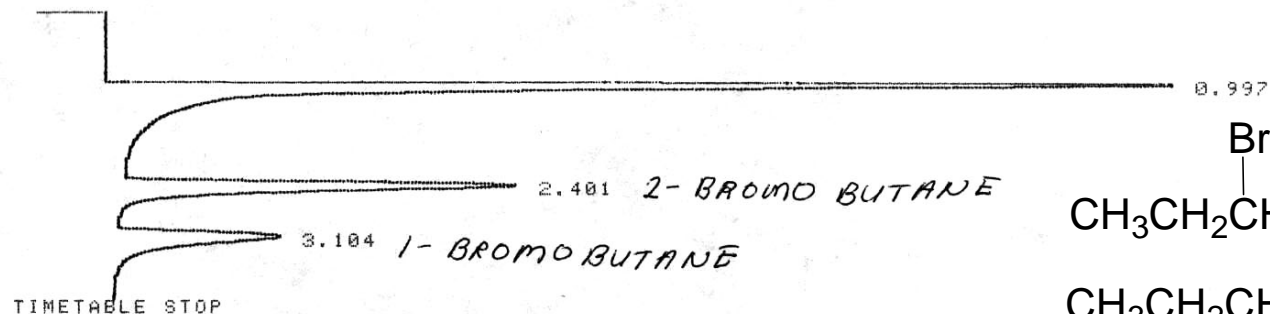


^{13}C NMR Shifts (ppm): 62.30, 34.89, 19.09, 13.92.

Gas Chromatographic Analysis of a Mixture of 1-bromobutane and 2-bromobutane

ALKYL HALIDES REF
COLUMN A PS16 11.5
JAN 2/07 OK *MD*

* RUN # 7 JAN 2, 2007 11:50:18
START



Closing signal file M:SIGNAL .RAW

RUN# 7 JAN 2, 2007 11:50:18

SAMPLE NAME: column a
COLUMN TEMP= 50 c

SIGNAL FILE: M:SIGNAL.RAW

alkylhalides

AREA%	RT	AREA	TYPE	WIDTH	AREA%
	.997	812687	PB	.101	54.29568
	2.401	435480	BB	.153	29.09445
	3.104	248613	BB	.210	16.60986

TOTAL AREA=1496780

MUL FACTOR=1.0000E+00