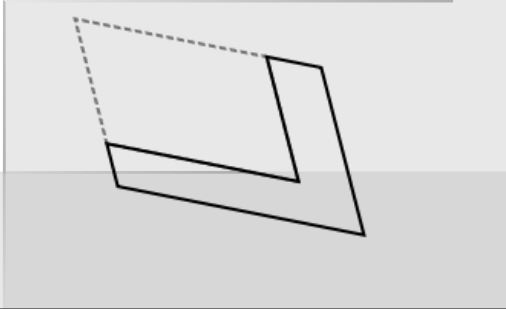


### The Function of Mathematics in Ithaca



"Insofar as the propositions of mathematics give an account of reality they are not certain; and insofar as they are certain they do not describe reality," – Albert Einstein

"The splendid certainty which I had always hoped to find in mathematics was lost in a bewildering maze. . . . It is truly a complicated conceptual labyrinth." – Bertrand Russel

- In 1882 (Joyce's Birth) Ferdinand Lindemann proved the transcendentalism of pi, meaning it cannot be the solution of any algebraic equation. Meaning one could not construct a square with precisely the same area as a circle.
- Bloom "squaring the circle" on pp 574. Line 1070.

### Mathematical Errors in Ithaca

- pp 546 line 90--: "Did he fall?"
- pp 555 line 446--: "What relation existed between their ages?"
- pp 601 line 2126--: "If he had smiled why would he have smiled?"

"With respect to the later chapters of Ulysses: "Instead of 'truth' about his subject, Joyce offers us an exercise in the many ways in which a subject can be discussed" - Karen Lawrence

### Further Reading:

- "Joyce's Unreliable Catechist: Mathematics and the Narration of Ithaca" by Patrick McCarthy
- "'Dividends and Divisors Ever Diminishing': Joyce's Use of Mathematics in Ithaca" by Michael Livingston

### Bloom/Stephen Relationship in Ithaca

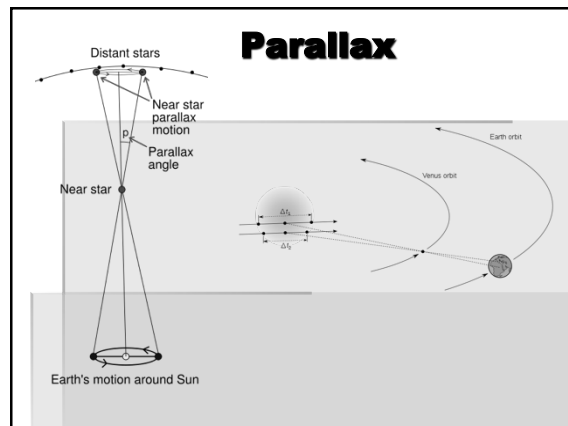


### Joyce on Ithaca

"I am writing Ithaca in the form of a mathematical catechism. All events are resolved into their cosmic physical, psychical, etc. equivalents, e.g., Bloom jumping down the area, drawing water from the tap, the micturition in the garden, the cone of incense, lighted candle and statue so that not only will the reader know everything and know it in the baldest coldest way but Bloom and Stephen thereby become heavenly bodies, wanderers like the stars at which they gaze."

### Stephen and Bloom in Parallaxial Drift

"of the parallax or parallaxial drift of so-called fixed stars, in reality evermoving wanderers from immeasurably remote eons to infinitely remote futures in comparison with which the years, threescore and ten, of allotted human life formed a parenthesis of infinitesimal brevity" (17.1052-56) pp573



### "What course did Bloom and Stephen follow returning?"

"Starting united both at normal walking pace from Beresford place they followed in the order named Lower and Middle Gardiner streets and Mountjoy square, west: then, at reduced pace..." (17.1-4) pp544

"The trajectories of their, first sequent, then simultaneous, urinations were dissimilar: Bloom's longer, less irruent, in the incomplete form of the bifurcated penultimate alphabetical letter, who in his ultimate year at High School (1880) had been capable of attaining the point of greatest altitude..." (17.1192-95) pp577

### Moments of Familiarity/ Otherness

- Age (pp 555 line 446--)
- Temperament (pp 558 line 559--)
- Drinking speed (pp 554 line 377--)
- Reaction to the void (pp 572 line 1011--)
- Keyless (pp 546 line 80--)
- Past/Future (pp 565 line 776--)

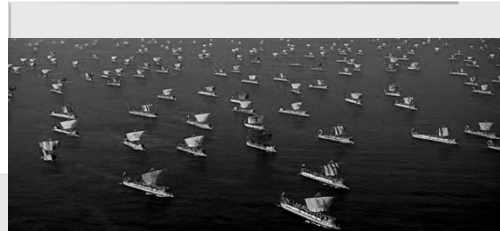
### Further Reading:

- "Style and Narrative in the 'Ithaca' Chapter of Joyce's Ulysses" by Karen R. Lawrence
- "Science in Ithaca" by Avrom Fleishman
- "'Ithaca's' Westward-Turning Earth: A New Portal of Discovery in 'Ulysses'" by William S. Doxey

### Bloom's Homecoming: Who Returns to Ithaca?

- The Reader will "know everything and know it in the baldest coldest way."
- Epic Catalogue, "*Builds up our conviction that an enormous, even cosmic action is taking place.*" – Stephen Adams, *Poetic Designs*

### Epic Catalogue in Motion



### Post-Catalogue Comparison

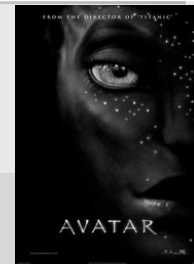
#### The Odyssey "Book 10"

- "Amphinomos's helper, a squire and Doulikhion war-chief named Moulkos, mixed a drink for them in the wine-bowl and went around to serve them. They offered the blissful Gods their drops, then drank the honey-sweet vintage. After they poured for the Gods and drank as their hearts wished they went their ways, each man to rest in his own house."
- Lines 420 – 439.

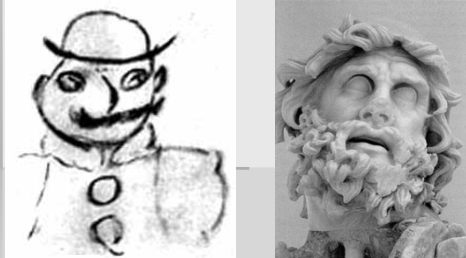
#### Ulysses "Ithaca"

- He had observed with augmenting frequency in the preceding members of the same series the same concupiscence, inflammably transmitted, first with alarm, then with understanding, then with desire, finally with fatigue, with alternating symptoms of epicene comprehension and apprehension," (p. 602).

### Nolan vs. Cameron: Constructing the Epic Character



## More Importantly, Bloom vs. Odysseus, his own Archetype.



### **"Privacy in Bloom" in *Ulysses* in Focus: Genetic, Textual and Personal Views - Dr. Michael Groden, 2010.**

*"Ever since I first read Ulysses, Leopold Bloom has provided the clearest and most dependable image I've found of the kind of person I'd like to be, someone who lives an ordinary life and survives with optimism, good humour, integrity and dignity."*

*"He is a literary character after all. But my sense of his dignity and heroism is connected to my voyeuristic interest in his inner life, to my access to what, if he were a living human being, he would surely want to keep private."*

## Bloom: The Rebirth of the Epic Mode

Thomas Carlyle in a letter to Alfred, Lord Tennyson

Elizabeth Barrett Browning in *Aura Leigh*

- Epic is solely "A refuge from life... a medieval arras... from the horrors of the industrial revolution,"
- "Their sole work is to represent the age,
- Their age, not Charlemagne's.
- To flinch from modern varnish, coat or flounce,
- Cry out for togas the picturesque,
- Is fatal – foolish too. King Arthur's self
- Was commonplace to Lady Guinevere:
- And Camelot to minstrels seemed as flat
- As Fleet Street to our poets."

## Bloom: Waterlover, Drawer of Water, Watercarrier.

- "It's indisputable hegemony extended in square leagues over all the regions below the subequatorial tropic of Capricorn: The multiseular stability of its primeval basin," (p. 549).
- "To have sustained no positive loss. To have brought a positive gain to others. Light to the Gentiles," (p. 553).
- "Behold, When ye are entered into the city, there shall a man meet you bearing a pitcher of water... Follow him into the House where he entereth in." – Luke 22:10

## Bloom: Waterlover, Drawer of Water, Watercarrier.

- "Brothers and sisters had he none. / Yet that man's father was his grandfather's son," (p. 581).
- "The image of a solitary (ipsorelative) mutable (aliorelative) man," (Ibid).
- Ipsorelative vs. Aliorelative: Carl Jung's concept of inner and outer worlds of character.

## Bloom: Waterlover, Drawer of Water, Watercarrier.

- "The reconciliation of the 'world within,' and the 'world without' extends somehow to Bloom; he becomes part of a larger unity." For with the Ego's realization of the Shadow, both are embraced by a "a figure that somehow dwarfs the ego in scope and intensity, the Jungian Self," – Jean Kimball, *Odyssey of the Psyche: Jungian Patterns in Joyce's Ulysses*, 79.

## **Discussion**

- Is Leopold Bloom a unique character whose *telos* remains distinct from Odysseus? i.e. Does Bloom become Odysseus' 'Avatar' or does he 'Incept' the epic in his subconscious?