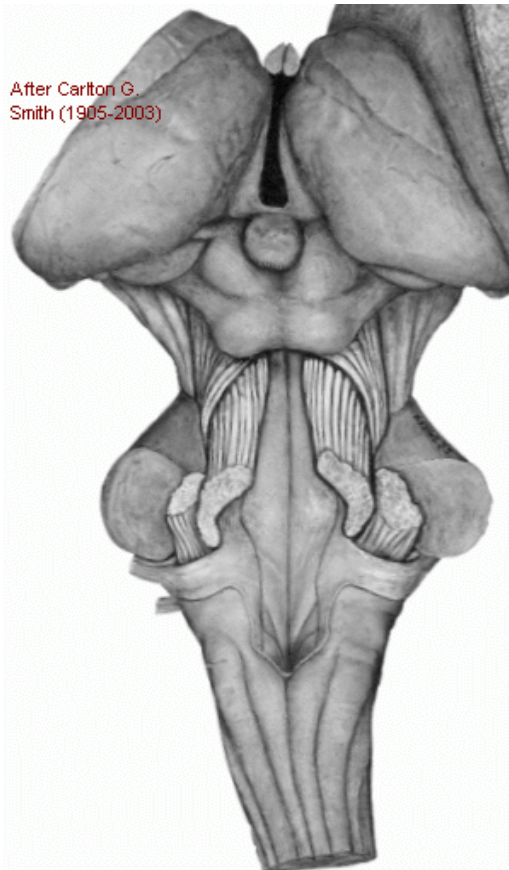
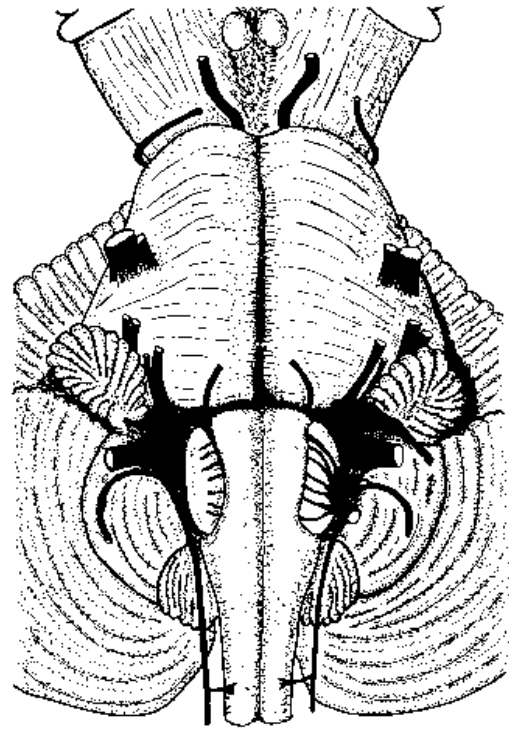
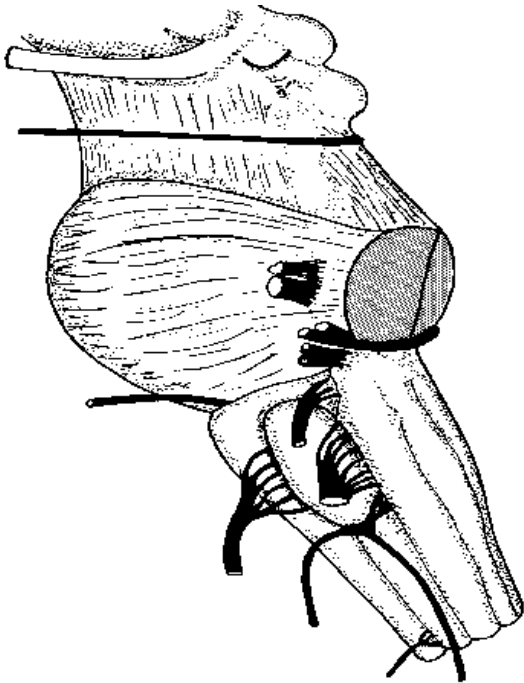


## THE BRAIN STEM



After Carlton G.  
Smith (1905-2003)

- Midbrain:** Tectum: superior & inferior colliculi  
Cerebral peduncle: basis pedunculi, substantia nigra & tegmentum (nuclei, long tracts)  
Superior cerebellar peduncle (output to thalamus & motor cortex)
- Pons:** Basal [ventral] part - corticospinal, corticopontine & pontocerebellar fibres, and pontine nuclei  
Tegmentum (nuclei; ascending & descending tracts)  
Middle cerebellar peduncle
- Medulla:** Gracile & cuneate tubercles (nuclei)  
Inferior cerebellar peduncle (vestibulo- and spinocerebellar fibres)  
Olive (landmark; also precerebellar nucleus)  
Pyramid (corticospinal fibres)
- At all levels:** Cranial nerves and decussations of pathways.

THE BRAIN STEM

