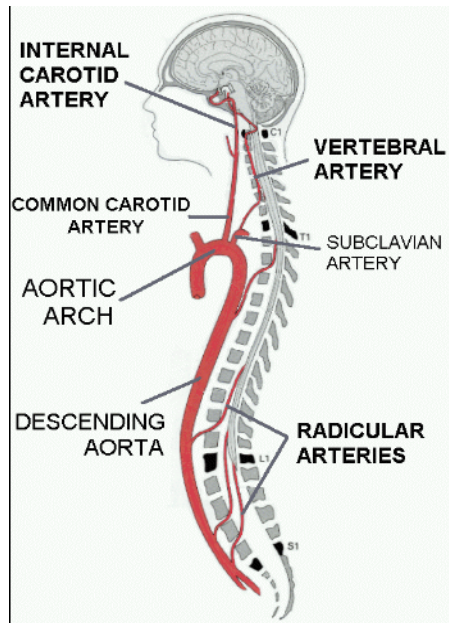
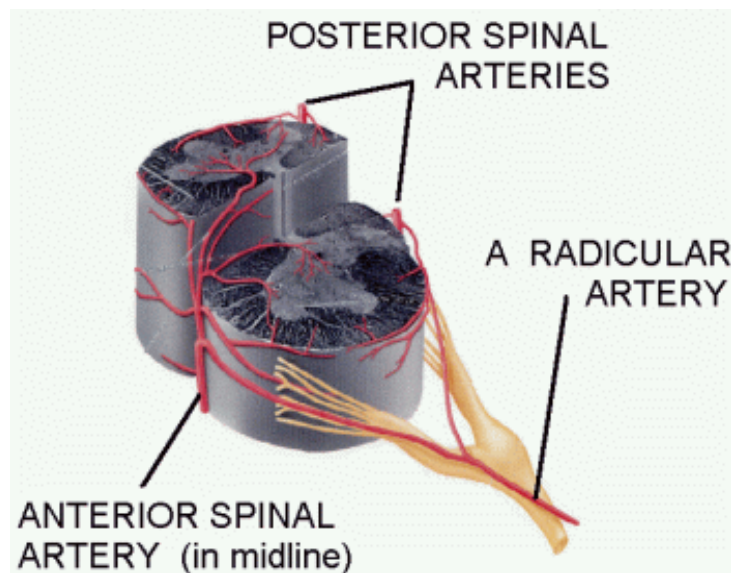


## ARTERIES OF THE CENTRAL NERVOUS SYSTEM.

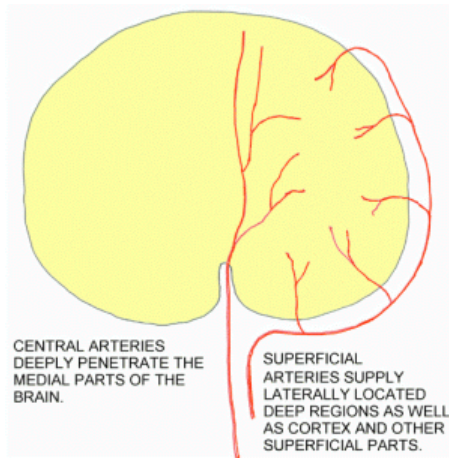


General plan  
(shown only for the left side)

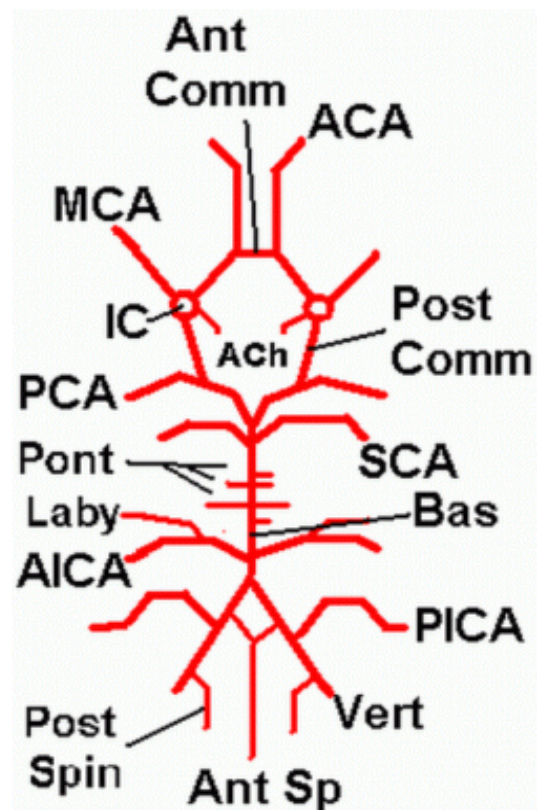
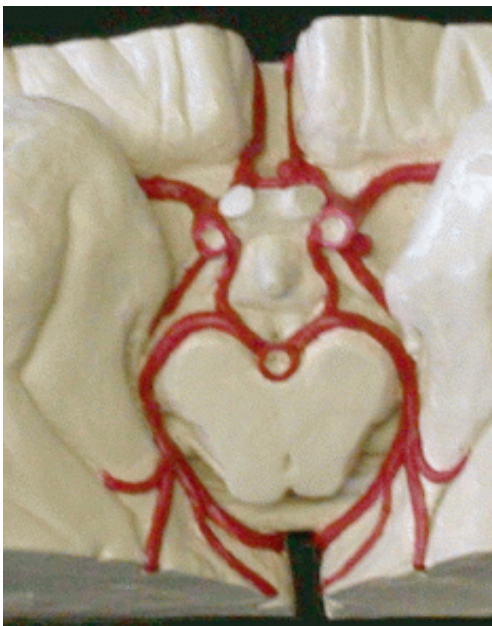
Arterial supply to a segment of the spinal cord.



Scheme of arterial supply to the brain.

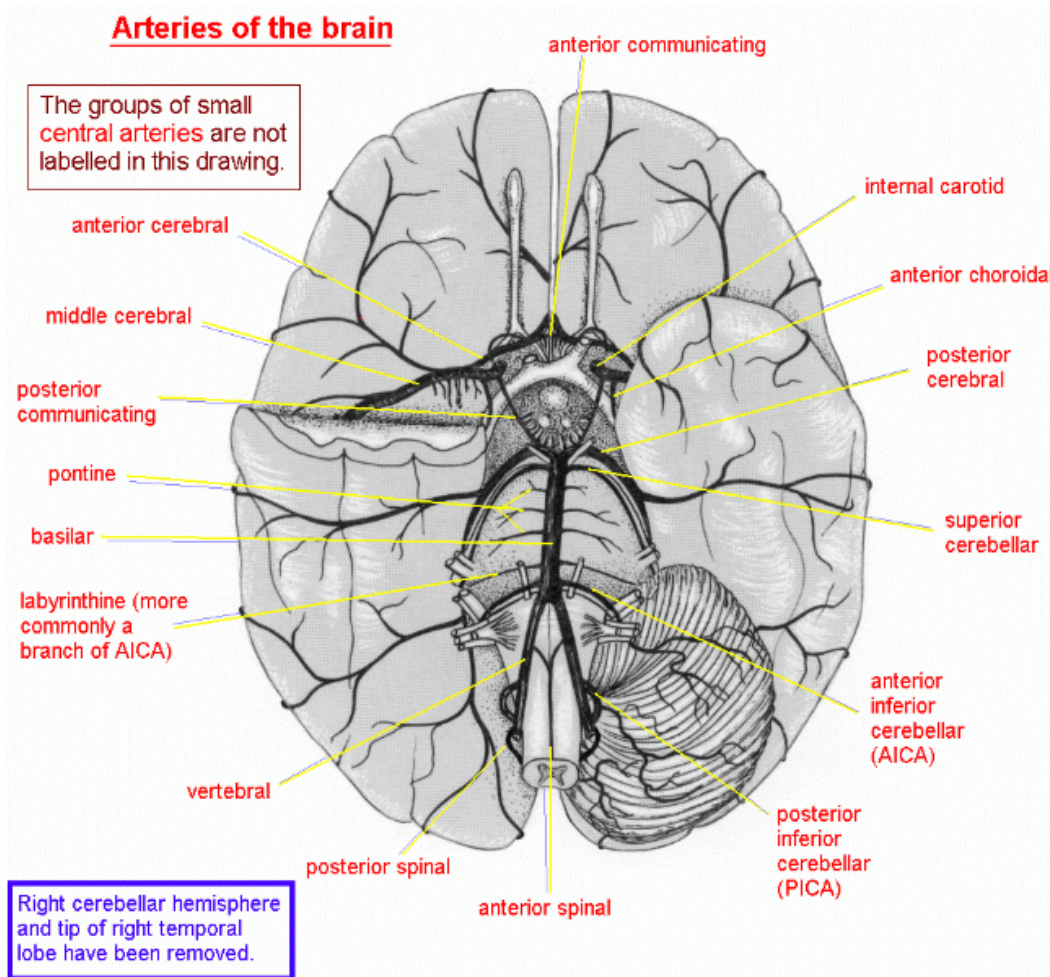


The arterial circle (circle of Willis).

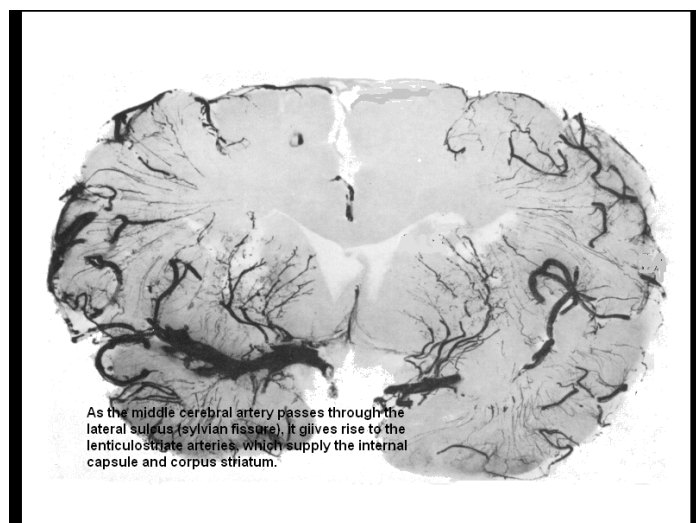


This diagram does not show the central arteries, which are small branches from the proximal segments of the three cerebral arteries and from the posterior communicating artery. Central arteries supply the diencephalon, corpus striatum and internal capsule.

## Arteries of the brain.

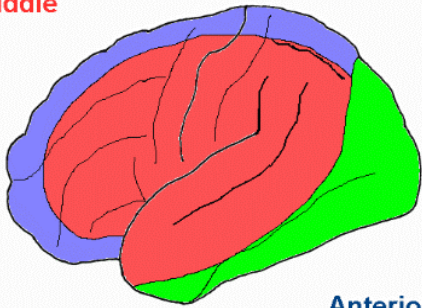


Indian ink-gelatin injection of the middle cerebral artery.

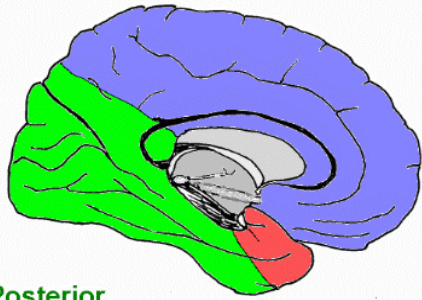


CEREBRAL ARTERY TERRITORIES

Middle



Anterior

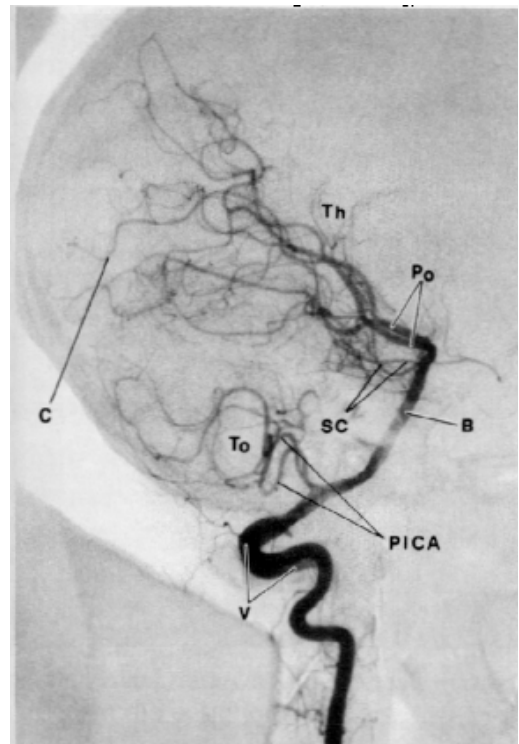
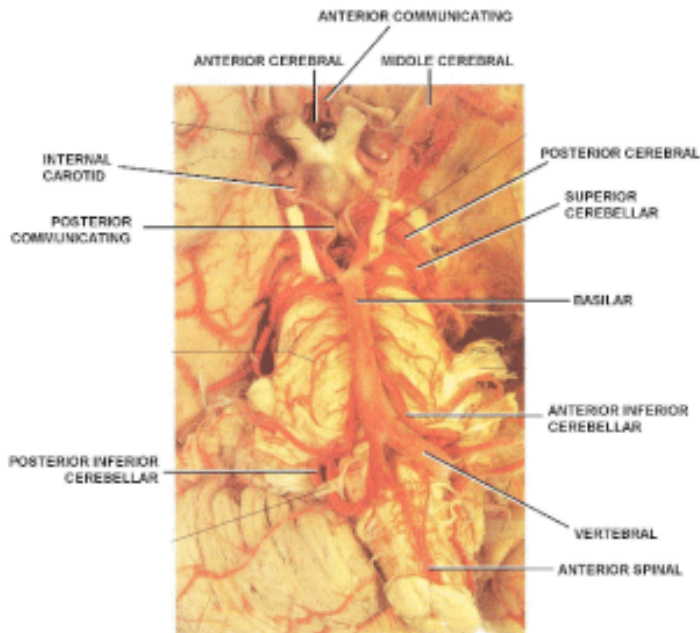


Posterior

Middle - red

Anterior - blue

Posterior - green



Vertebral angiogram