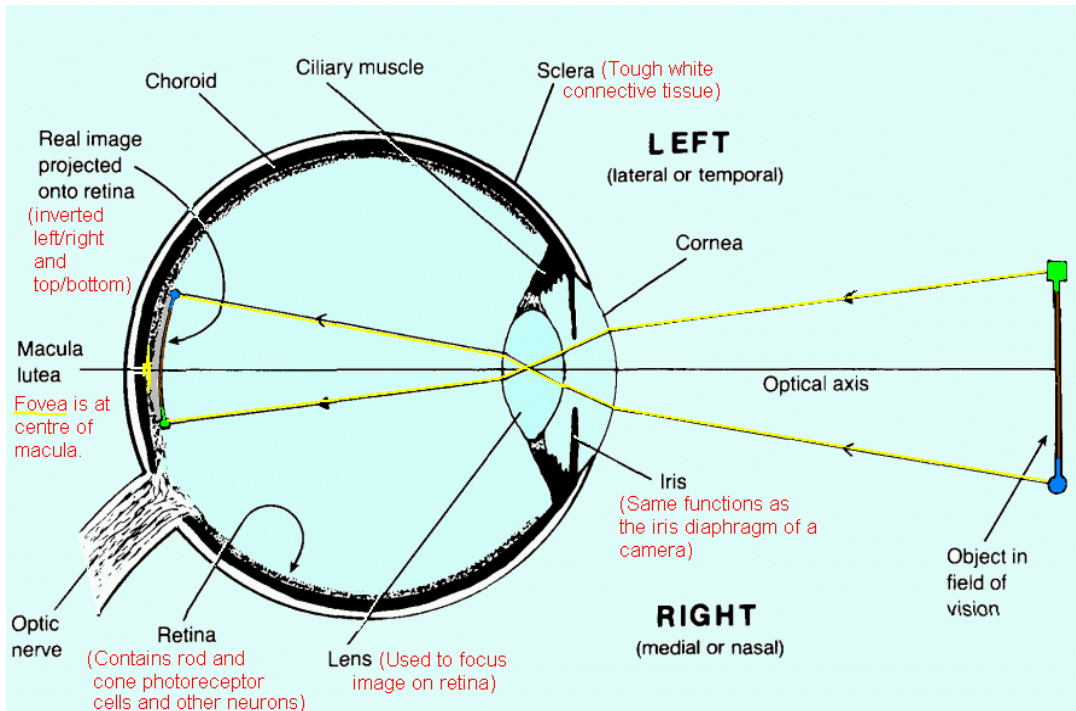
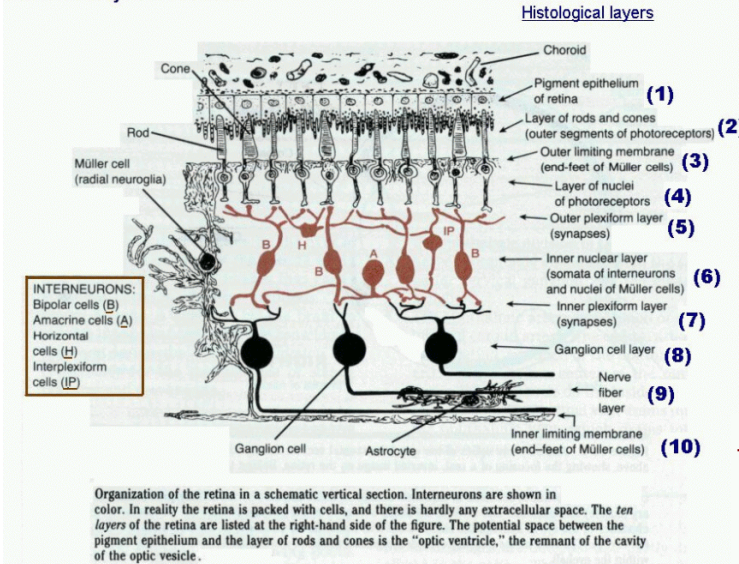


VISUAL SYSTEM



Histology and neuronal connectivity of the retina



(For Anatomy 530a students are not expected to learn the names of the histological layers of the retina.)

DESTINATIONS OF THE OPTIC TRACT

HYPOTHALAMUS — Day/Night; Season of year

PRETECTAL AREA — Pupillary light reflex

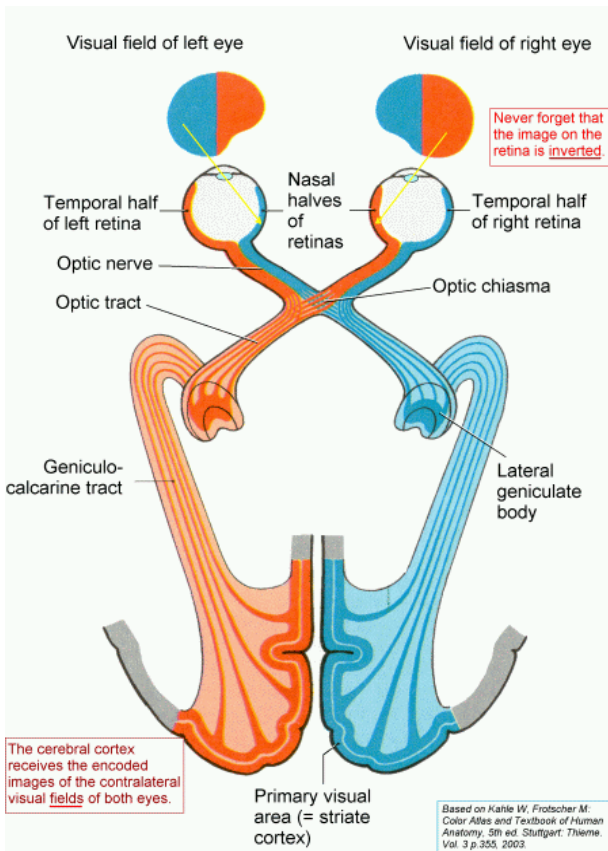
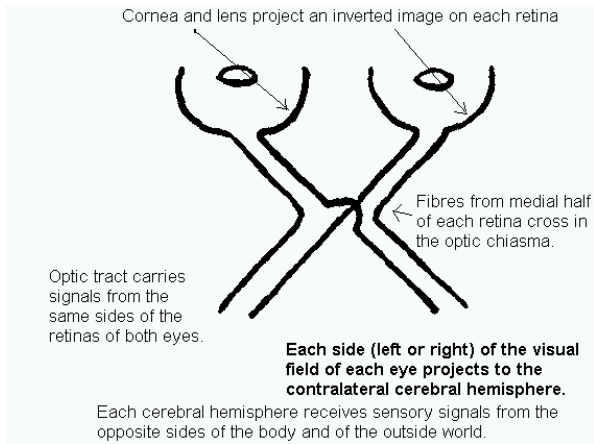
SUPERIOR COLLICULUS — Eye movements

LATERAL GENICULATE BODY — Conscious vision

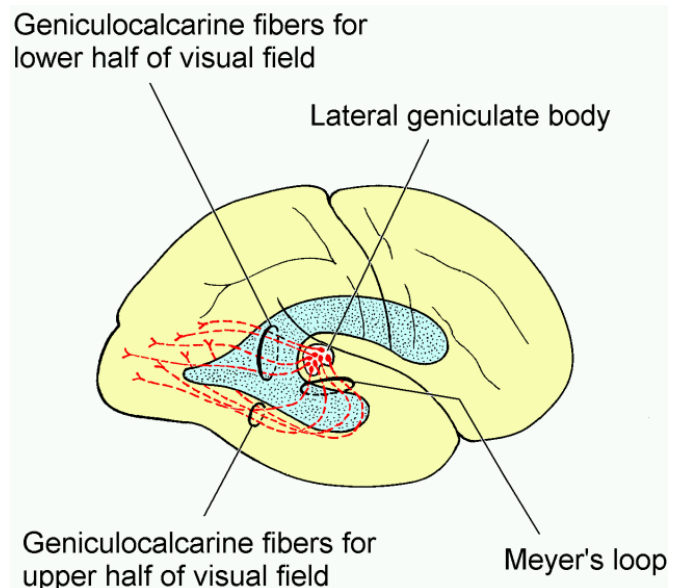
REMEMBER!

Each optic tract receives fibres from the left and the right retina.

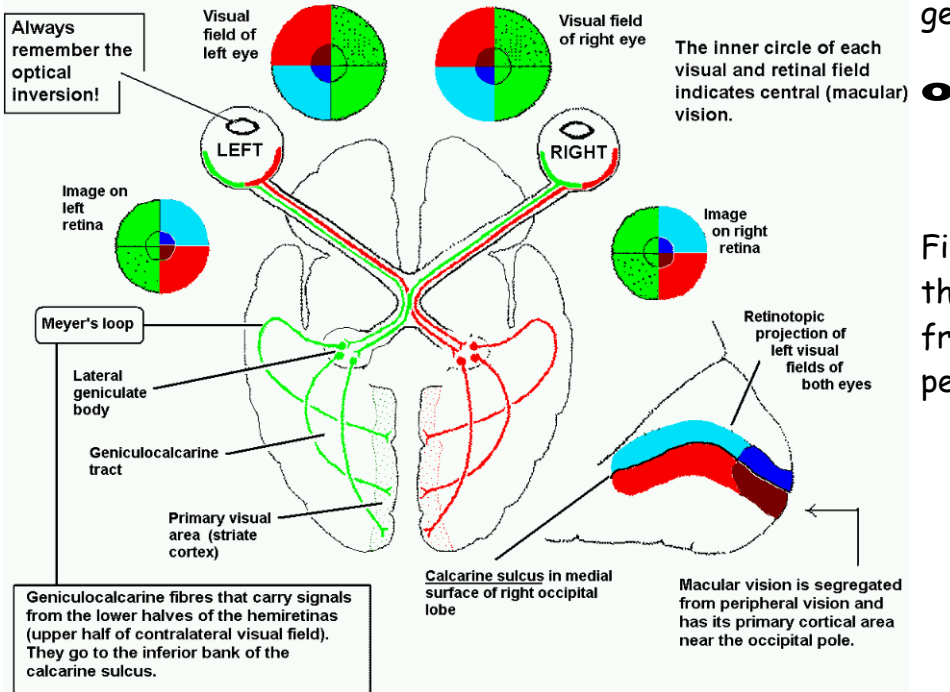
This simple diagram shows (1) inversion of image on retina, (2) the nature of the partial decussation of fibres in the optic chiasma, (3) the projection of the visual fields to the contralateral cerebral hemisphere.



Plan view - the visual pathways from above.



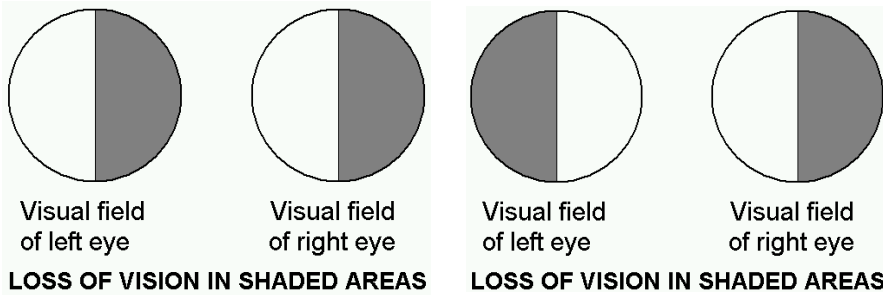
Retinotopic projection to the primary visual cortex



Side view of the right geniculocalcarine tract.

Fibres carrying signals from the macula are separated from those concerned with peripheral vision

VISUAL FIELD DEFECTS. Locate a single lesion responsible for the abnormality.



Homonymous hemianopia with macular sparing

