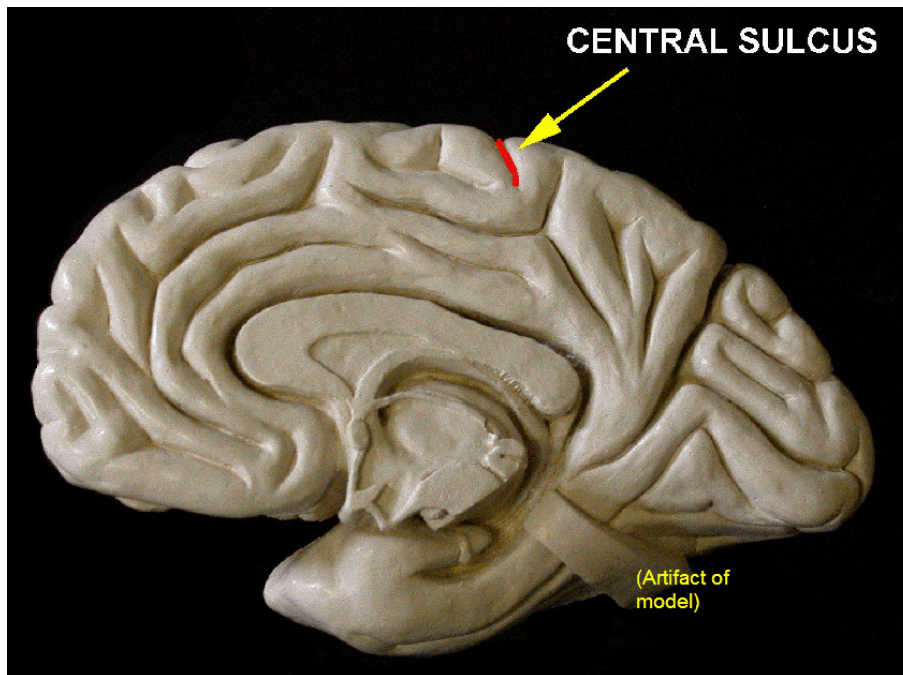
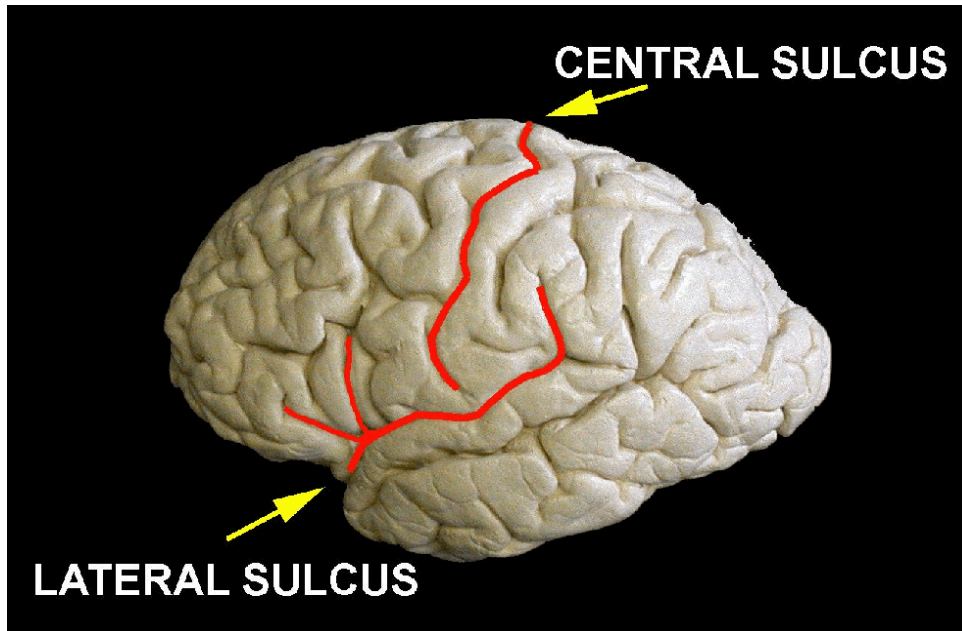
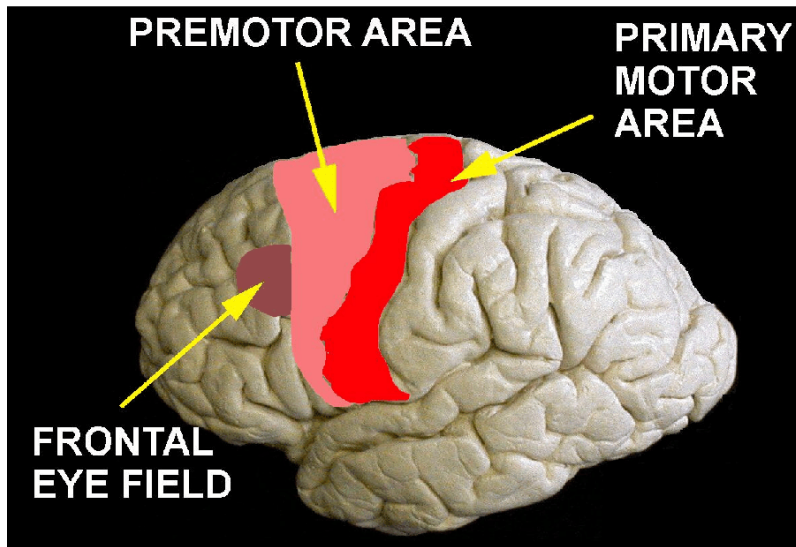
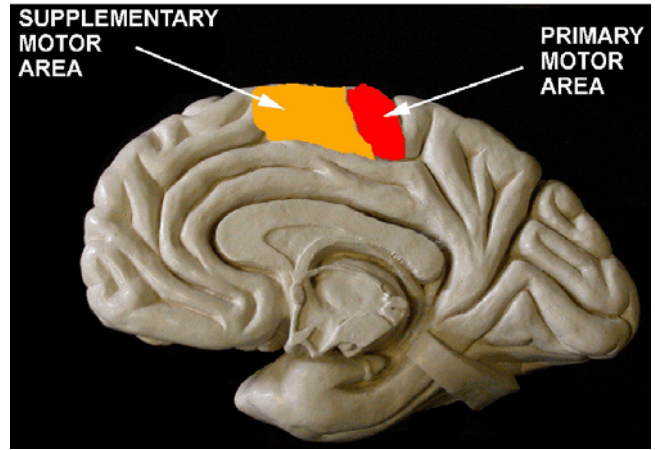
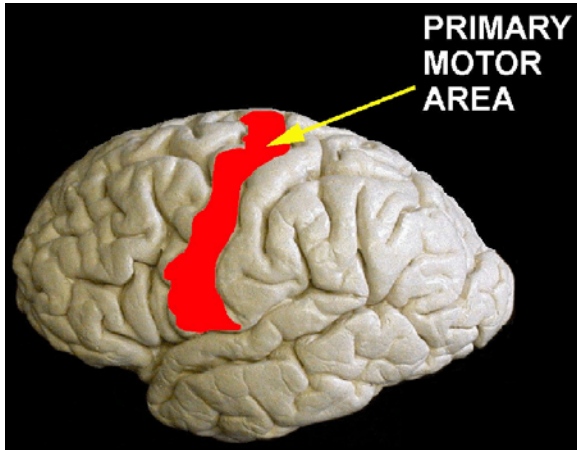
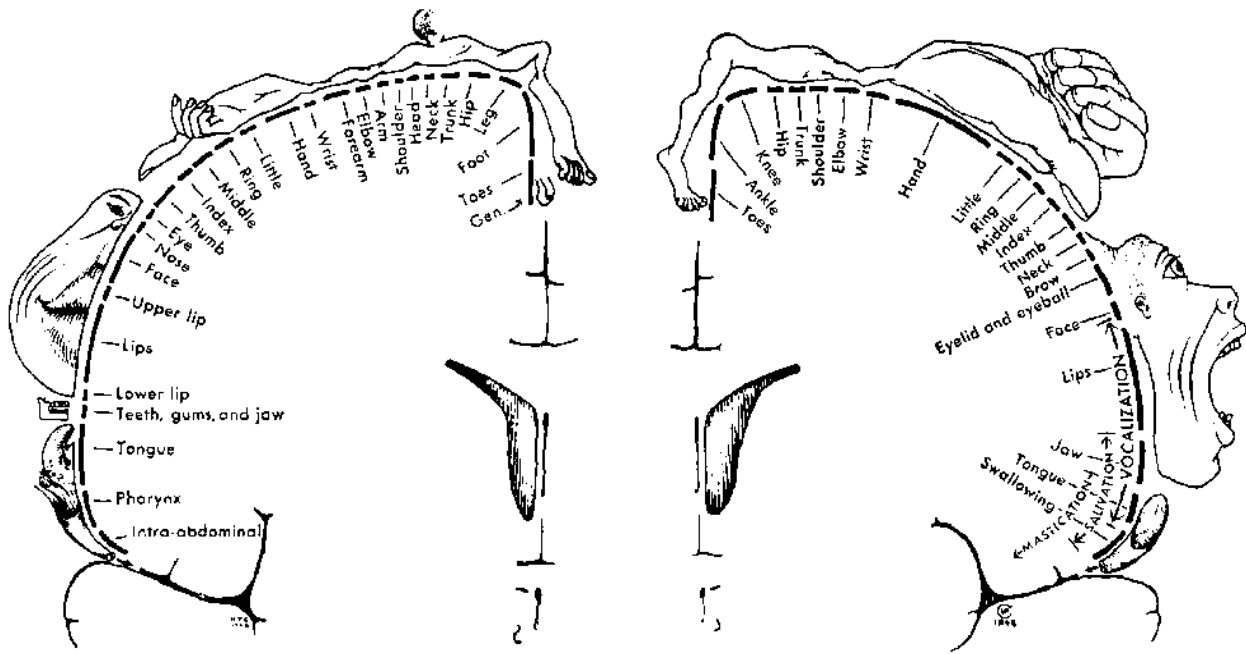
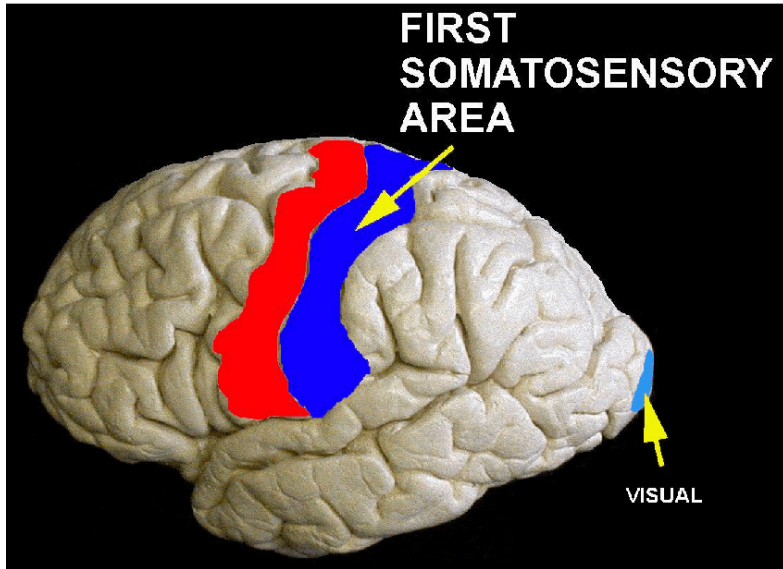


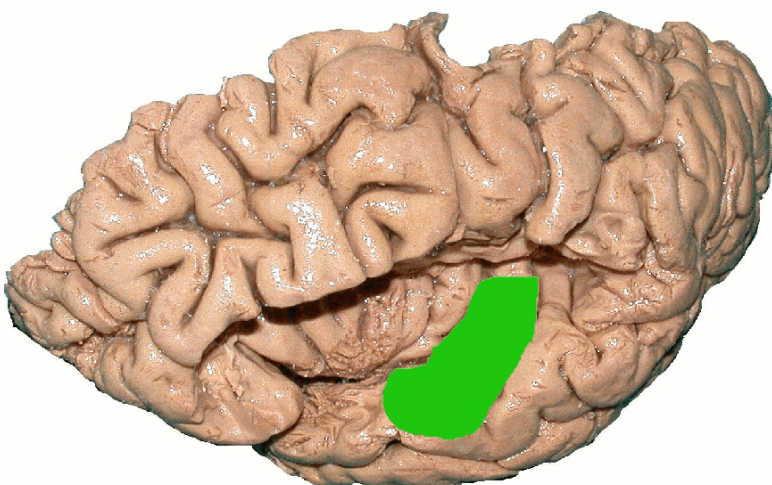
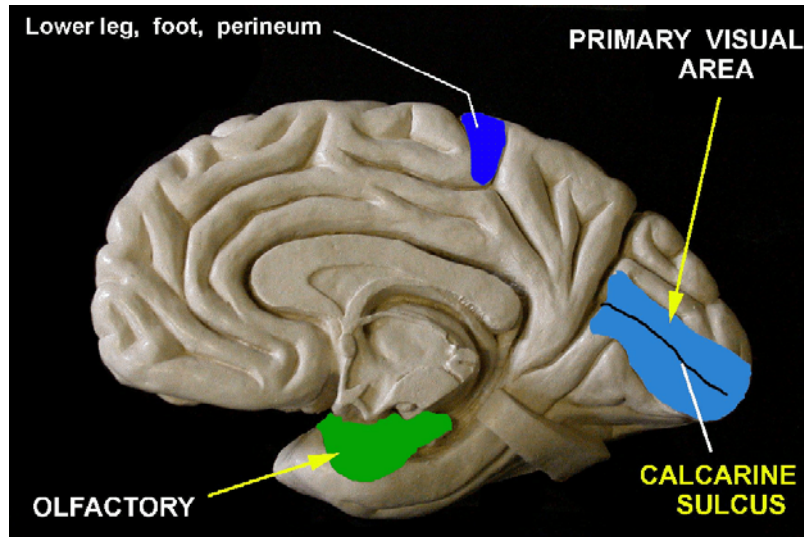
Anatomy 9535. FUNCTIONAL AREAS OF THE CEREBRAL CORTEX







Sensory (left) and motor (right) homunculi, after Penfield W, Rasmussen T (1957). *The Cerebral cortex of Man*. New York: Macmillan. See also Penfield W, Boldrey E (1937) *Brain* 60: 389-443.



ANTERIOR TRANSVERSE TEMPORAL GYRI (Heschl's convolutions)

