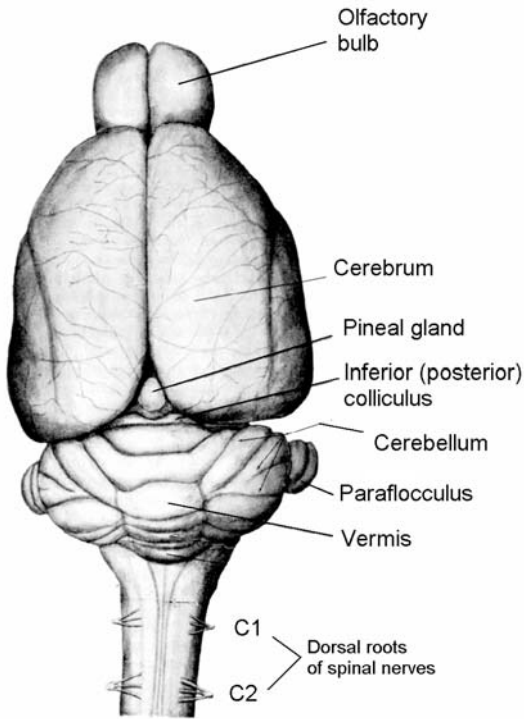
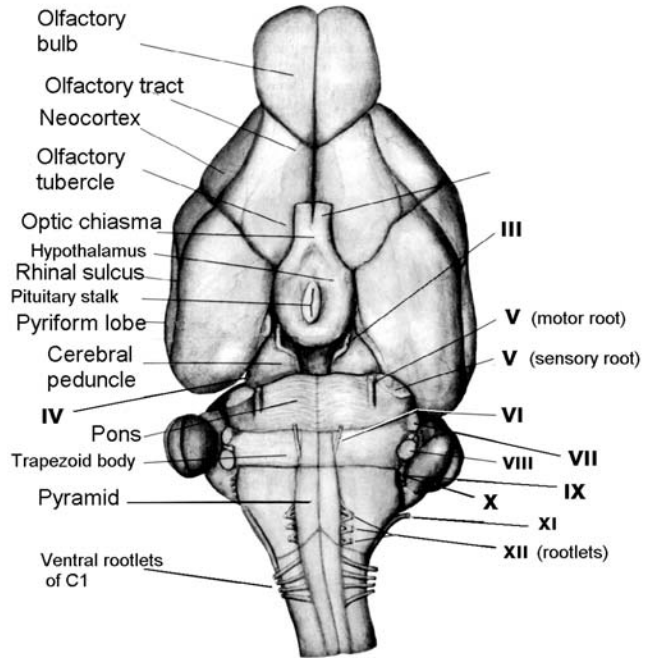


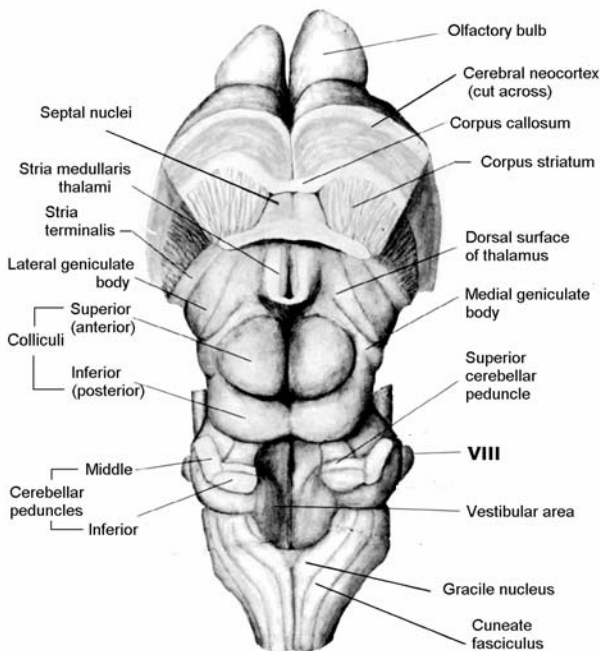
# Rat brain pictures



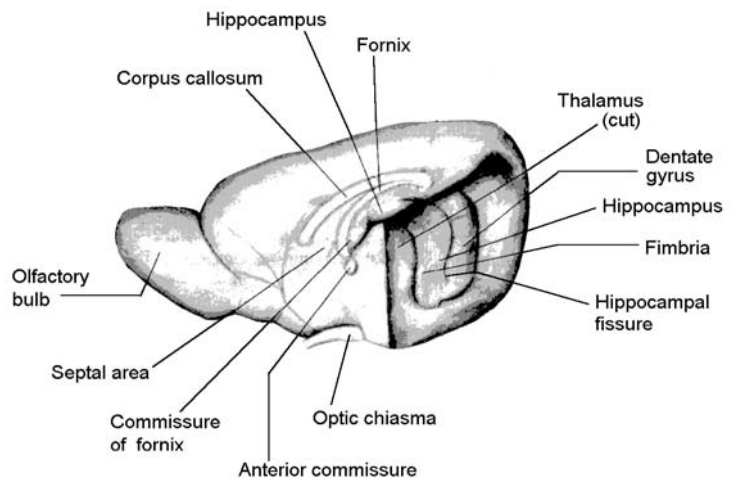
Dorsal aspect of brain and rostral two segments of spinal cord.



Ventral aspect of the brain, and junction of medulla with spinal cord.



Dissection: Dorsal view of brain stem after removal of cerebellum.



Dissection: Medial view of the right cerebrum. Hippocampus is visible after removing brain stem and most of the right thalamus.

## Transverse (coronal) sections

Rostral to caudal.

