

[Aerial Mapping](#) Call Us For Geomatic, Geospatial Lidar Mapping Services And More. [FugroSeslGeomaticsLtd.ca](http://FugroSeslGeomaticsLtd.ca)  
[Get Satellite Maps Free](#) Get Satellite Maps, Aerial Photos & More With The Free Maps Toolbar [Maps.alot.com](http://Maps.alot.com)  
[Real Time Fleet Tracking](#) Get Real Time Fleet Tracking Info. Access 10 Search Engines At Once. [www.Info.com/Re...](http://www.Info.com/Re...)

« [IARU Locator Echo](#)

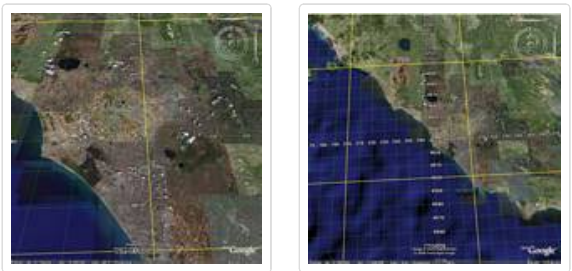
[Nearby.org.uk Network Layers](#) »

# Worldwide UTM Grid Lines

BY TOPOMATT, ON FEBRUARY 1ST, 2008

Overlay 100km, 10km and 1km UTM gridlines onto Google Earth. The higher resolution gridlines automatically become visible as you zoom in. There is a small delay each time you change the view as the updated grid loads.

ServiceDesk Plus  
 10,000 Customers Love Their HelpDesk  
 Download Now



KML Content Created By: [Nearby.org.uk](http://Nearby.org.uk)

Access From:



**eSpatial** Sign up for a no obligation, 14 Day Free Trial of our award winning, web based GIS software  
 Sign up for instant access  
 No credit card required. No obligation 14 day trial. No software downloads or plugins.

Share / Save

[GEOGRAPHY](#) [GRID, UTM](#)

6 comments to Worldwide UTM Grid Lines



Amy

JULY 23, 2009 AT 8:40 PM · REPLY

Thank you so much, this is just what I have been looking for!



David F

AUGUST 18, 2009 AT 4:49 PM · REPLY

This is extremely useful as it clearly shows Google Earth's UTM Grid is off by approximately 230m from NAD27.



**David F**

AUGUST 18, 2009 AT 4:58 PM · REPLY

David F :

This is extremely useful as it clearly shows Google Earth's UTM Grid is off by approximately 230m from NAD27.

Sorry, meant to add that NAD27 is what most USGS maps use.



**Mauricio**

AUGUST 24, 2009 AT 8:38 AM · REPLY

Thank you very much, i'm a Chilean Forestry Engineer and for me this tool is a extremely useful.

Thanks a lot



**Paul Campbell**

NOVEMBER 15, 2009 AT 8:25 PM · REPLY

@David F

David – I too was troubled because I was finding point were off by values 30 – 180m  
I think Goggle Earth uses NAD84.



**Mike D**

DECEMBER 8, 2009 AT 7:32 PM · REPLY

Wow! Thank you so much!

I had almost lost hope in finding this but I thought I'd check again and boom...

After trying to create my own UTM-grid with the GE-Path plug-in (see link below), I was able to create an isometric grid with 1km spacing, however the corners of the grid didn't line up with the exact UTM coordinates I had entered (error = 50-200m). GE-Path is a great tool for finding perimeter and area, and for creating grids that don't require high precision coordinates, but don't use it for UTM grids...especially with this Kml-file!

Thank you so much; you just saved me an immeasurable amount of time and stress. You rock!

<http://www.sgrillo.net/googleearth/gepath.htm>