

## THESE TERMS GOVERN YOUR USE OF THIS DOCUMENT

**Your use of this Ontario Geological Survey document (the “Content”) is governed by the terms set out on this page (“Terms of Use”). By downloading this Content, you (the “User”) have accepted, and have agreed to be bound by, the Terms of Use.**

**Content:** This Content is offered by the Province of Ontario’s *Ministry of Northern Development and Mines* (MNDM) as a public service, on an “as-is” basis. Recommendations and statements of opinion expressed in the Content are those of the author or authors and are not to be construed as statement of government policy. You are solely responsible for your use of the Content. You should not rely on the Content for legal advice nor as authoritative in your particular circumstances. Users should verify the accuracy and applicability of any Content before acting on it. MNDM does not guarantee, or make any warranty express or implied, that the Content is current, accurate, complete or reliable. MNDM is not responsible for any damage however caused, which results, directly or indirectly, from your use of the Content. MNDM assumes no legal liability or responsibility for the Content whatsoever.

**Links to Other Web Sites:** This Content may contain links, to Web sites that are not operated by MNDM. Linked Web sites may not be available in French. MNDM neither endorses nor assumes any responsibility for the safety, accuracy or availability of linked Web sites or the information contained on them. The linked Web sites, their operation and content are the responsibility of the person or entity for which they were created or maintained (the “Owner”). Both your use of a linked Web site, and your right to use or reproduce information or materials from a linked Web site, are subject to the terms of use governing that particular Web site. Any comments or inquiries regarding a linked Web site must be directed to its Owner.

**Copyright:** Canadian and international intellectual property laws protect the Content. Unless otherwise indicated, copyright is held by the Queen’s Printer for Ontario.

It is recommended that reference to the Content be made in the following form: <Author’s last name>, <Initials> <year of publication>. <Content title>; Ontario Geological Survey, <Content publication series and number>, <total number of pages>p.

**Use and Reproduction of Content:** The Content may be used and reproduced only in accordance with applicable intellectual property laws. *Non-commercial* use of unsubstantial excerpts of the Content is permitted provided that appropriate credit is given and Crown copyright is acknowledged. Any substantial reproduction of the Content or any *commercial* use of all or part of the Content is prohibited without the prior written permission of MNDM. Substantial reproduction includes the reproduction of any illustration or figure, such as, but not limited to graphs, charts and maps. Commercial use includes commercial distribution of the Content, the reproduction of multiple copies of the Content for any purpose whether or not commercial, use of the Content in commercial publications, and the creation of value-added products using the Content.

### Contact:

FOR FURTHER INFORMATION ON	PLEASE CONTACT:	BY TELEPHONE:	BY E-MAIL:
The Reproduction of Content	MNDM Publication Services	Local: (705) 670-5691 Toll Free: 1-888-415-9845, ext. 5691 (inside Canada, United States)	<a href="mailto:Pubsales@ndm.gov.on.ca">Pubsales@ndm.gov.on.ca</a>
The Purchase of MNDM Publications	MNDM Publication Sales	Local: (705) 670-5691 Toll Free: 1-888-415-9845, ext. 5691 (inside Canada, United States)	<a href="mailto:Pubsales@ndm.gov.on.ca">Pubsales@ndm.gov.on.ca</a>
Crown Copyright	Queen’s Printer	Local: (416) 326-2678 Toll Free: 1-800-668-9938 (inside Canada, United States)	<a href="mailto:Copyright@gov.on.ca">Copyright@gov.on.ca</a>

**LES CONDITIONS CI-DESSOUS RÉGISSENT L'UTILISATION DU PRÉSENT DOCUMENT.**

***Votre utilisation de ce document de la Commission géologique de l'Ontario (le « contenu ») est régie par les conditions décrites sur cette page (« conditions d'utilisation »). En téléchargeant ce contenu, vous (l'« utilisateur ») signifiez que vous avez accepté d'être lié par les présentes conditions d'utilisation.***

**Contenu :** Ce contenu est offert en l'état comme service public par le *ministère du Développement du Nord et des Mines* (MDNM) de la province de l'Ontario. Les recommandations et les opinions exprimées dans le contenu sont celles de l'auteur ou des auteurs et ne doivent pas être interprétées comme des énoncés officiels de politique gouvernementale. Vous êtes entièrement responsable de l'utilisation que vous en faites. Le contenu ne constitue pas une source fiable de conseils juridiques et ne peut en aucun cas faire autorité dans votre situation particulière. Les utilisateurs sont tenus de vérifier l'exactitude et l'applicabilité de tout contenu avant de l'utiliser. Le MDNM n'offre aucune garantie expresse ou implicite relativement à la mise à jour, à l'exactitude, à l'intégralité ou à la fiabilité du contenu. Le MDNM ne peut être tenu responsable de tout dommage, quelle qu'en soit la cause, résultant directement ou indirectement de l'utilisation du contenu. Le MDNM n'assume aucune responsabilité légale de quelque nature que ce soit en ce qui a trait au contenu.

**Liens vers d'autres sites Web :** Ce contenu peut comporter des liens vers des sites Web qui ne sont pas exploités par le MDNM. Certains de ces sites pourraient ne pas être offerts en français. Le MDNM se dégage de toute responsabilité quant à la sûreté, à l'exactitude ou à la disponibilité des sites Web ainsi reliés ou à l'information qu'ils contiennent. La responsabilité des sites Web ainsi reliés, de leur exploitation et de leur contenu incombe à la personne ou à l'entité pour lesquelles ils ont été créés ou sont entretenus (le « propriétaire »). Votre utilisation de ces sites Web ainsi que votre droit d'utiliser ou de reproduire leur contenu sont assujettis aux conditions d'utilisation propres à chacun de ces sites. Tout commentaire ou toute question concernant l'un de ces sites doivent être adressés au propriétaire du site.

**Droits d'auteur :** Le contenu est protégé par les lois canadiennes et internationales sur la propriété intellectuelle. Sauf indication contraire, les droits d'auteurs appartiennent à l'Imprimeur de la Reine pour l'Ontario.

Nous recommandons de faire paraître ainsi toute référence au contenu : nom de famille de l'auteur, initiales, année de publication, titre du document, Commission géologique de l'Ontario, série et numéro de publication, nombre de pages.

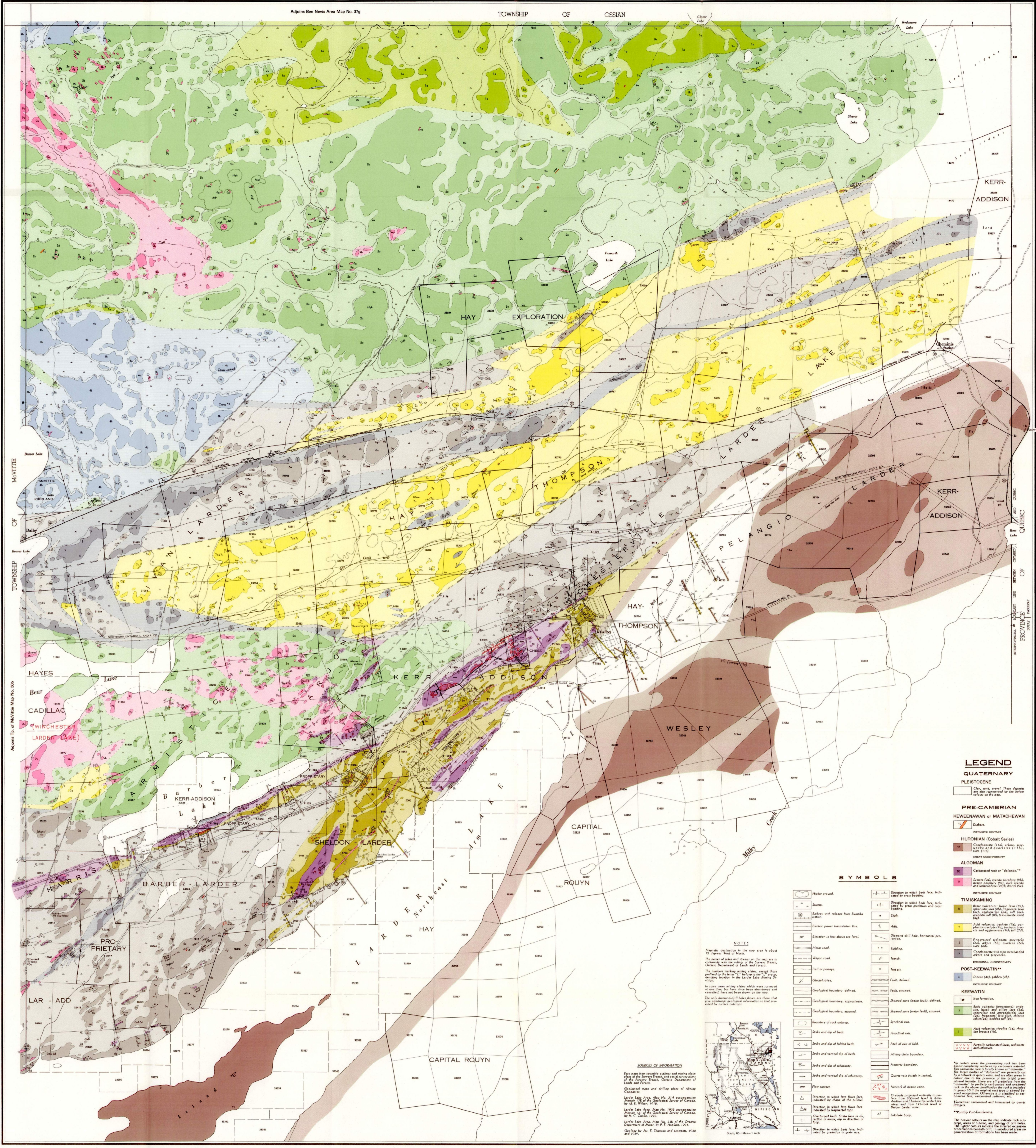
**Utilisation et reproduction du contenu :** Le contenu ne peut être utilisé et reproduit qu'en conformité avec les lois sur la propriété intellectuelle applicables. L'utilisation de courts extraits du contenu à des fins *non commerciales* est autorisée, à condition de faire une mention de source appropriée reconnaissant les droits d'auteurs de la Couronne. Toute reproduction importante du contenu ou toute utilisation, en tout ou en partie, du contenu à des fins *commerciales* est interdite sans l'autorisation écrite préalable du MDNM. Une reproduction jugée importante comprend la reproduction de toute illustration ou figure comme les graphiques, les diagrammes, les cartes, etc. L'utilisation commerciale comprend la distribution du contenu à des fins commerciales, la reproduction de copies multiples du contenu à des fins commerciales ou non, l'utilisation du contenu dans des publications commerciales et la création de produits à valeur ajoutée à l'aide du contenu.

**Renseignements :**

<b>POUR PLUS DE RENSEIGNEMENTS SUR</b>	<b>VEUILLEZ VOUS ADRESSER À :</b>	<b>PAR TÉLÉPHONE :</b>	<b>PAR COURRIEL :</b>
<b>la reproduction du contenu</b>	Services de publication du MDNM	Local : (705) 670-5691 Numéro sans frais : 1 888 415-9845, poste 5691 (au Canada et aux États-Unis)	<a href="mailto:Pubsales@ndm.gov.on.ca">Pubsales@ndm.gov.on.ca</a>
<b>l'achat des publications du MDNM</b>	Vente de publications du MDNM	Local : (705) 670-5691 Numéro sans frais : 1 888 415-9845, poste 5691 (au Canada et aux États-Unis)	<a href="mailto:Pubsales@ndm.gov.on.ca">Pubsales@ndm.gov.on.ca</a>
<b>les droits d'auteurs de la Couronne</b>	Imprimeur de la Reine	Local : 416 326-2678 Numéro sans frais : 1 800 668-9938 (au Canada et aux États-Unis)	<a href="mailto:Copyright@gov.on.ca">Copyright@gov.on.ca</a>

Adjoins Ben Nevis Area Map No. 37g

TOWNSHIP OF OSSIAN



**LEGEND**

**QUATERNARY**

**PLEISTOCENE**

Clay, sand, gravel. These deposits are also represented by the letter colour on this map.

**PRE-CAMBRIAN**

**KEEWATIN OR MATAHEWAN**

Dolomite

**HURONIAN (Cobalt Series)**

Comptonian (T1), arkose, grey, blue (T2), quartzite (T3), slate (T4), gneiss (T5), mica schist (T6), quartzite (T7), granite (T8)

**ALGOMAN**

Carbonated rock or "dolomite"

**TIMISKAMING**

Basic gneiss: basic lava (B1), andesite (B2), diorite (B3), quartzite (B4), mica schist (B5), amphibolite (B6), quartzite (B7), granite (B8), mica schist (B9), quartzite (B10), amphibolite (B11), quartzite (B12), mica schist (B13), quartzite (B14), amphibolite (B15), quartzite (B16), mica schist (B17), quartzite (B18), amphibolite (B19), quartzite (B20), mica schist (B21), quartzite (B22), amphibolite (B23), quartzite (B24), mica schist (B25), quartzite (B26), amphibolite (B27), quartzite (B28), mica schist (B29), quartzite (B30), amphibolite (B31), quartzite (B32), mica schist (B33), quartzite (B34), amphibolite (B35), quartzite (B36), mica schist (B37), quartzite (B38), amphibolite (B39), quartzite (B40), mica schist (B41), quartzite (B42), amphibolite (B43), quartzite (B44), mica schist (B45), quartzite (B46), amphibolite (B47), quartzite (B48), mica schist (B49), quartzite (B50), amphibolite (B51), quartzite (B52), mica schist (B53), quartzite (B54), amphibolite (B55), quartzite (B56), mica schist (B57), quartzite (B58), amphibolite (B59), quartzite (B60), mica schist (B61), quartzite (B62), amphibolite (B63), quartzite (B64), mica schist (B65), quartzite (B66), amphibolite (B67), quartzite (B68), mica schist (B69), quartzite (B70), amphibolite (B71), quartzite (B72), mica schist (B73), quartzite (B74), amphibolite (B75), quartzite (B76), mica schist (B77), quartzite (B78), amphibolite (B79), quartzite (B80), mica schist (B81), quartzite (B82), amphibolite (B83), quartzite (B84), mica schist (B85), quartzite (B86), amphibolite (B87), quartzite (B88), mica schist (B89), quartzite (B90), amphibolite (B91), quartzite (B92), mica schist (B93), quartzite (B94), amphibolite (B95), quartzite (B96), mica schist (B97), quartzite (B98), amphibolite (B99), quartzite (B100), mica schist (B101), quartzite (B102), amphibolite (B103), quartzite (B104), mica schist (B105), quartzite (B106), amphibolite (B107), quartzite (B108), mica schist (B109), quartzite (B110), amphibolite (B111), quartzite (B112), mica schist (B113), quartzite (B114), amphibolite (B115), quartzite (B116), mica schist (B117), quartzite (B118), amphibolite (B119), quartzite (B120), mica schist (B121), quartzite (B122), amphibolite (B123), quartzite (B124), mica schist (B125), quartzite (B126), amphibolite (B127), quartzite (B128), mica schist (B129), quartzite (B130), amphibolite (B131), quartzite (B132), mica schist (B133), quartzite (B134), amphibolite (B135), quartzite (B136), mica schist (B137), quartzite (B138), amphibolite (B139), quartzite (B140), mica schist (B141), quartzite (B142), amphibolite (B143), quartzite (B144), mica schist (B145), quartzite (B146), amphibolite (B147), quartzite (B148), mica schist (B149), quartzite (B150), amphibolite (B151), quartzite (B152), mica schist (B153), quartzite (B154), amphibolite (B155), quartzite (B156), mica schist (B157), quartzite (B158), amphibolite (B159), quartzite (B160), mica schist (B161), quartzite (B162), amphibolite (B163), quartzite (B164), mica schist (B165), quartzite (B166), amphibolite (B167), quartzite (B168), mica schist (B169), quartzite (B170), amphibolite (B171), quartzite (B172), mica schist (B173), quartzite (B174), amphibolite (B175), quartzite (B176), mica schist (B177), quartzite (B178), amphibolite (B179), quartzite (B180), mica schist (B181), quartzite (B182), amphibolite (B183), quartzite (B184), mica schist (B185), quartzite (B186), amphibolite (B187), quartzite (B188), mica schist (B189), quartzite (B190), amphibolite (B191), quartzite (B192), mica schist (B193), quartzite (B194), amphibolite (B195), quartzite (B196), mica schist (B197), quartzite (B198), amphibolite (B199), quartzite (B200), mica schist (B201), quartzite (B202), amphibolite (B203), quartzite (B204), mica schist (B205), quartzite (B206), amphibolite (B207), quartzite (B208), mica schist (B209), quartzite (B210), amphibolite (B211), quartzite (B212), mica schist (B213), quartzite (B214), amphibolite (B215), quartzite (B216), mica schist (B217), quartzite (B218), amphibolite (B219), quartzite (B220), mica schist (B221), quartzite (B222), amphibolite (B223), quartzite (B224), mica schist (B225), quartzite (B226), amphibolite (B227), quartzite (B228), mica schist (B229), quartzite (B230), amphibolite (B231), quartzite (B232), mica schist (B233), quartzite (B234), amphibolite (B235), quartzite (B236), mica schist (B237), quartzite (B238), amphibolite (B239), quartzite (B240), mica schist (B241), quartzite (B242), amphibolite (B243), quartzite (B244), mica schist (B245), quartzite (B246), amphibolite (B247), quartzite (B248), mica schist (B249), quartzite (B250), amphibolite (B251), quartzite (B252), mica schist (B253), quartzite (B254), amphibolite (B255), quartzite (B256), mica schist (B257), quartzite (B258), amphibolite (B259), quartzite (B260), mica schist (B261), quartzite (B262), amphibolite (B263), quartzite (B264), mica schist (B265), quartzite (B266), amphibolite (B267), quartzite (B268), mica schist (B269), quartzite (B270), amphibolite (B271), quartzite (B272), mica schist (B273), quartzite (B274), amphibolite (B275), quartzite (B276), mica schist (B277), quartzite (B278), amphibolite (B279), quartzite (B280), mica schist (B281), quartzite (B282), amphibolite (B283), quartzite (B284), mica schist (B285), quartzite (B286), amphibolite (B287), quartzite (B288), mica schist (B289), quartzite (B290), amphibolite (B291), quartzite (B292), mica schist (B293), quartzite (B294), amphibolite (B295), quartzite (B296), mica schist (B297), quartzite (B298), amphibolite (B299), quartzite (B300), mica schist (B301), quartzite (B302), amphibolite (B303), quartzite (B304), mica schist (B305), quartzite (B306), amphibolite (B307), quartzite (B308), mica schist (B309), quartzite (B310), amphibolite (B311), quartzite (B312), mica schist (B313), quartzite (B314), amphibolite (B315), quartzite (B316), mica schist (B317), quartzite (B318), amphibolite (B319), quartzite (B320), mica schist (B321), quartzite (B322), amphibolite (B323), quartzite (B324), mica schist (B325), quartzite (B326), amphibolite (B327), quartzite (B328), mica schist (B329), quartzite (B330), amphibolite (B331), quartzite (B332), mica schist (B333), quartzite (B334), amphibolite (B335), quartzite (B336), mica schist (B337), quartzite (B338), amphibolite (B339), quartzite (B340), mica schist (B341), quartzite (B342), amphibolite (B343), quartzite (B344), mica schist (B345), quartzite (B346), amphibolite (B347), quartzite (B348), mica schist (B349), quartzite (B350), amphibolite (B351), quartzite (B352), mica schist (B353), quartzite (B354), amphibolite (B355), quartzite (B356), mica schist (B357), quartzite (B358), amphibolite (B359), quartzite (B360), mica schist (B361), quartzite (B362), amphibolite (B363), quartzite (B364), mica schist (B365), quartzite (B366), amphibolite (B367), quartzite (B368), mica schist (B369), quartzite (B370), amphibolite (B371), quartzite (B372), mica schist (B373), quartzite (B374), amphibolite (B375), quartzite (B376), mica schist (B377), quartzite (B378), amphibolite (B379), quartzite (B380), mica schist (B381), quartzite (B382), amphibolite (B383), quartzite (B384), mica schist (B385), quartzite (B386), amphibolite (B387), quartzite (B388), mica schist (B389), quartzite (B390), amphibolite (B391), quartzite (B392), mica schist (B393), quartzite (B394), amphibolite (B395), quartzite (B396), mica schist (B397), quartzite (B398), amphibolite (B399), quartzite (B400), mica schist (B401), quartzite (B402), amphibolite (B403), quartzite (B404), mica schist (B405), quartzite (B406), amphibolite (B407), quartzite (B408), mica schist (B409), quartzite (B410), amphibolite (B411), quartzite (B412), mica schist (B413), quartzite (B414), amphibolite (B415), quartzite (B416), mica schist (B417), quartzite (B418), amphibolite (B419), quartzite (B420), mica schist (B421), quartzite (B422), amphibolite (B423), quartzite (B424), mica schist (B425), quartzite (B426), amphibolite (B427), quartzite (B428), mica schist (B429), quartzite (B430), amphibolite (B431), quartzite (B432), mica schist (B433), quartzite (B434), amphibolite (B435), quartzite (B436), mica schist (B437), quartzite (B438), amphibolite (B439), quartzite (B440), mica schist (B441), quartzite (B442), amphibolite (B443), quartzite (B444), mica schist (B445), quartzite (B446), amphibolite (B447), quartzite (B448), mica schist (B449), quartzite (B450), amphibolite (B451), quartzite (B452), mica schist (B453), quartzite (B454), amphibolite (B455), quartzite (B456), mica schist (B457), quartzite (B458), amphibolite (B459), quartzite (B460), mica schist (B461), quartzite (B462), amphibolite (B463), quartzite (B464), mica schist (B465), quartzite (B466), amphibolite (B467), quartzite (B468), mica schist (B469), quartzite (B470), amphibolite (B471), quartzite (B472), mica schist (B473), quartzite (B474), amphibolite (B475), quartzite (B476), mica schist (B477), quartzite (B478), amphibolite (B479), quartzite (B480), mica schist (B481), quartzite (B482), amphibolite (B483), quartzite (B484), mica schist (B485), quartzite (B486), amphibolite (B487), quartzite (B488), mica schist (B489), quartzite (B490), amphibolite (B491), quartzite (B492), mica schist (B493), quartzite (B494), amphibolite (B495), quartzite (B496), mica schist (B497), quartzite (B498), amphibolite (B499), quartzite (B500), mica schist (B501), quartzite (B502), amphibolite (B503), quartzite (B504), mica schist (B505), quartzite (B506), amphibolite (B507), quartzite (B508), mica schist (B509), quartzite (B510), amphibolite (B511), quartzite (B512), mica schist (B513), quartzite (B514), amphibolite (B515), quartzite (B516), mica schist (B517), quartzite (B518), amphibolite (B519), quartzite (B520), mica schist (B521), quartzite (B522), amphibolite (B523), quartzite (B524), mica schist (B525), quartzite (B526), amphibolite (B527), quartzite (B528), mica schist (B529), quartzite (B530), amphibolite (B531), quartzite (B532), mica schist (B533), quartzite (B534), amphibolite (B535), quartzite (B536), mica schist (B537), quartzite (B538), amphibolite (B539), quartzite (B540), mica schist (B541), quartzite (B542), amphibolite (B543), quartzite (B544), mica schist (B545), quartzite (B546), amphibolite (B547), quartzite (B548), mica schist (B549), quartzite (B550), amphibolite (B551), quartzite (B552), mica schist (B553), quartzite (B554), amphibolite (B555), quartzite (B556), mica schist (B557), quartzite (B558), amphibolite (B559), quartzite (B560), mica schist (B561), quartzite (B562), amphibolite (B563), quartzite (B564), mica schist (B565), quartzite (B566), amphibolite (B567), quartzite (B568), mica schist (B569), quartzite (B570), amphibolite (B571), quartzite (B572), mica schist (B573), quartzite (B574), amphibolite (B575), quartzite (B576), mica schist (B577), quartzite (B578), amphibolite (B579), quartzite (B580), mica schist (B581), quartzite (B582), amphibolite (B583), quartzite (B584), mica schist (B585), quartzite (B586), amphibolite (B587), quartzite (B588), mica schist (B589), quartzite (B590), amphibolite (B591), quartzite (B592), mica schist (B593), quartzite (B594), amphibolite (B595), quartzite (B596), mica schist (B597), quartzite (B598), amphibolite (B599), quartzite (B600), mica schist (B601), quartzite (B602), amphibolite (B603), quartzite (B604), mica schist (B605), quartzite (B606), amphibolite (B607), quartzite (B608), mica schist (B609), quartzite (B610), amphibolite (B611), quartzite (B612), mica schist (B613), quartzite (B614), amphibolite (B615), quartzite (B616), mica schist (B617), quartzite (B618), amphibolite (B619), quartzite (B620), mica schist (B621), quartzite (B622), amphibolite (B623), quartzite (B624), mica schist (B625), quartzite (B626), amphibolite (B627), quartzite (B628), mica schist (B629), quartzite (B630), amphibolite (B631), quartzite (B632), mica schist (B633), quartzite (B634), amphibolite (B635), quartzite (B636), mica schist (B637), quartzite (B638), amphibolite (B639), quartzite (B640), mica schist (B641), quartzite (B642), amphibolite (B643), quartzite (B644), mica schist (B645), quartzite (B646), amphibolite (B647), quartzite (B648), mica schist (B649), quartzite (B650), amphibolite (B651), quartzite (B652), mica schist (B653), quartzite (B654), amphibolite (B655), quartzite (B656), mica schist (B657), quartzite (B658), amphibolite (B659), quartzite (B660), mica schist (B661), quartzite (B662), amphibolite (B663), quartzite (B664), mica schist (B665), quartzite (B666), amphibolite (B667), quartzite (B668), mica schist (B669), quartzite (B670), amphibolite (B671), quartzite (B672), mica schist (B673), quartzite (B674), amphibolite (B675), quartzite (B676), mica schist (B677), quartzite (B678), amphibolite (B679), quartzite (B680), mica schist (B681), quartzite (B682), amphibolite (B683), quartzite (B684), mica schist (B685), quartzite (B686), amphibolite (B687), quartzite (B688), mica schist (B689), quartzite (B690), amphibolite (B691), quartzite (B692), mica schist (B693), quartzite (B694), amphibolite (B695), quartzite (B696), mica schist (B697), quartzite (B698), amphibolite (B699), quartzite (B700), mica schist (B701), quartzite (B702), amphibolite (B703), quartzite (B704), mica schist (B705), quartzite (B706), amphibolite (B707), quartzite (B708), mica schist (B709), quartzite (B710), amphibolite (B711), quartzite (B712), mica schist (B713), quartzite (B714), amphibolite (B715), quartzite (B716), mica schist (B717), quartzite (B718), amphibolite (B719), quartzite (B720), mica schist (B721), quartzite (B722), amphibolite (B723), quartzite (B724), mica schist (B725), quartzite (B726), amphibolite (B727), quartzite (B728), mica schist (B729), quartzite (B730), amphibolite (B731), quartzite (B732), mica schist (B733), quartzite (B734), amphibolite (B735), quartzite (B736), mica schist (B737), quartzite (B738), amphibolite (B739), quartzite (B740), mica schist (B741), quartzite (B742), amphibolite (B743), quartzite (B744), mica schist (B745), quartzite (B746), amphibolite (B747), quartzite (B748), mica schist (B749), quartzite (B750), amphibolite (B751), quartzite (B752), mica schist (B753), quartzite (B754), amphibolite (B755), quartzite (B756), mica schist (B757), quartzite (B758), amphibolite (B759), quartzite (B760), mica schist (B761), quartzite (B762), amphibolite (B763), quartzite (B764), mica schist (B765), quartzite (B766), amphibolite (B767), quartzite (B768), mica schist (B769), quartzite (B770), amphibolite (B771), quartzite (B772), mica schist (B773), quartzite (B774), amphibolite (B775), quartzite (B776), mica schist (B777), quartzite (B778), amphibolite (B779), quartzite (B780), mica schist (B781), quartzite (B782), amphibolite (B783), quartzite (B784), mica schist (B785), quartzite (B786), amphibolite (B787), quartzite (B788), mica schist (B789), quartzite (B790), amphibolite (B791), quartzite (B792), mica schist (B793), quartzite (B794), amphibolite (B795), quartzite (B796), mica schist (B797), quartzite (B798), amphibolite (B799), quartzite (B800), mica schist (B801), quartzite (B802), amphibolite (B803), quartzite (B804), mica schist (B805), quartzite (B806), amphibolite (B807), quartzite (B808), mica schist (B809), quartzite (B810), amphibolite (B811), quartzite (B812), mica schist (B813), quartzite (B814), amphibolite (B815), quartzite (B816), mica schist (B817), quartzite (B818), amphibolite (B819), quartzite (B820), mica schist (B821), quartzite (B822), amphibolite (B823), quartzite (B824), mica schist (B825), quartzite (B826), amphibolite (B827), quartzite (B828), mica schist (B829), quartzite (B830), amphibolite (B831), quartzite (B832), mica schist (B833), quartzite (B834), amphibolite (B835), quartzite (B836), mica schist (B837), quartzite (B838), amphibolite (B839), quartzite (B840), mica schist (B841), quartzite (B842), amphibolite (B843), quartzite (B844), mica schist (B845), quartzite (B846), amphibolite (B847), quartzite (B848), mica schist (B849), quartzite (B850), amphibolite (B851), quartzite (B852), mica schist (B853), quartzite (B854), amphibolite (B855), quartzite (B856), mica schist (B857), quartzite (B858), amphibolite (B859), quartzite (B860), mica schist (B861), quartzite (B862), amphibolite (B863), quartzite (B864), mica schist (B865), quartzite (B866), amphibolite (B867), quartzite (B868), mica schist (B869), quartzite (B870), amphibolite (B871), quartzite (B872), mica schist (B873), quartzite (B874), amphibolite (B875), quartzite (B876), mica schist (B877), quartzite (B878), amphibolite (B879), quartzite (B880), mica schist (B881), quartzite (B882), amphibolite (B883), quartzite (B884), mica schist (B885), quartzite (B886), amphibolite (B887), quartzite (B888), mica schist (B889), quartzite (B890), amphibolite (B891), quartzite (B892), mica schist (B893), quartzite (B894), amphibolite (B895), quartzite (B896), mica schist (B897), quartzite (B898), amphibolite (B899), quartzite (B900), mica schist (B901), quartzite (B902), amphibolite (B903), quartzite (B904), mica schist (B905), quartzite (B906), amphibolite (B907), quartzite (B908), mica schist (B909), quartzite (B910), amphibolite (B911), quartzite (B912), mica schist (B913), quartzite (B914), amphibolite (B915), quartzite (B916), mica schist (B917), quartzite (B918), amphibolite (B919), quartzite (B920), mica schist (B921), quartzite (B922), amphibolite (B923), quartzite (B924), mica schist (B925), quartzite (B926), amphibolite (B927), quartzite (B928), mica schist (B929), quartzite (B930), amphibolite (B931), quartzite (B932), mica schist (B933), quartzite (B934), amphibolite (B935), quartzite (B936), mica schist (B937), quartzite (B938), amphibolite (B939), quartzite (B940), mica schist (B941), quartzite (B942), amphibolite (B943), quartzite (B944), mica schist (B945), quartzite (B946), amphibolite (B947), quartzite (B948), mica schist (B949), quartzite (B950), amphibolite (B951), quartzite (B952), mica schist (B953), quartzite (B954), amphibolite (B955), quartzite (B956), mica schist (B957), quartzite (B958), amphibolite (B959), quartzite (B960), mica schist (B961), quartzite (B962), amphibolite (B963), quartzite (B964), mica schist (B965), quartzite (B966), amphibolite (B967), quartzite (B968), mica schist (B969), quartzite (B970), amphibolite (B971), quartzite (B972), mica schist (B973), quartzite (B974), amphibolite (B975), quartzite (B976), mica schist (B977), quartzite (B978), amphibolite (B979), quartzite (B980), mica schist (B981), quartzite (B982), amphibolite (B983), quartzite (B984), mica schist (B985), quartzite (B986), amphibolite (B987), quartzite (B988), mica schist (B989), quartzite (B990), amphibolite (B991), quartzite (B992), mica schist (B993), quartzite (B994), amphibolite (B995), quartzite (B996), mica schist (B997), quartzite (B998), amphibolite (B999), quartzite (B1000)

**POST-KEEWATIN\*\***

**KEEWATIN**

**KEEWATIN**

**KEEWATIN**

**KEEWATIN**

**KEEWATIN**

**KEEWATIN**

**KEEWATIN**

**KEEWATIN**

**KEEWATIN**

**KEEWATIN**

**KEEWATIN**

**KEEWATIN**

**KEEWATIN**

**KEEWATIN**

**KEEWATIN**

**KEEWATIN**

**KEEWATIN**

**KEEWATIN**

**KEEWATIN**

**KEEWATIN**

**SYMBOLS**

- Higher ground
- Swamp
- Railway with mileage from Swains station
- Electric power transmission line
- Motor road
- Water road
- Proprietary
- Glacial striae
- Geological boundary, defined
- Geological boundary, assumed
- Geological boundary, assumed
- Boundary of rock outcrop
- Strike and dip of beds
- Strike and dip of folded beds
- Strike and vertical dip of beds
- Strike and vertical dip of schistosity
- Direction in which beds face, indicated by green arrow
- Direction in which beds face, indicated by green arrow and cross bedding
- Adit
- Diamond drill hole, horizontal projection
- Building
- Trench
- Text pit
- Fault, defined
- Shattered zone (major fault), defined
- Shattered zone (major fault), assumed
- Synclinal axis
- Anticlinal axis
- Pitch of axis of fold
- Along claim boundary
- Proprietary boundary
- Quarry vein (width in inches)
- Network of quartz veins
- Circle (diameter vertically to surface from 250-foot level at Kerr-Addison and Pelangio Larder Lake and from 125-foot level at Barber Larder mine)
- Sulphide body

**NOTES**

Magnetic declination in the map area is about 12 degrees West of North. The names of lakes and rivers on this map are in conformity with the listings of the Survey Branch, Ontario Department of Lands and Forests. The numbers marking mining claims, except those marked by the letter "P" belong to the "P" group showing location in the Larder Lake Mining Division. In some cases mining claims which were surveyed at one time, but have since been abandoned and cancelled, have not been shown on the map. The only diamond drill holes shown are those that give additional geological information to that provided by surface outcrops.

**SOURCES OF INFORMATION**

Plan maps from topographic surface and mining claim files of the Survey Branch, and aerial survey plans of the Survey Branch, Ontario Department of Lands and Forests. Geological maps and drilling plans of Mining Commission. Larder Lake Area, Map No. 31A accompanying Memoir 12 of the Geological Survey of Canada. Larder Lake Area, Map No. 192B accompanying Memoir 12 of the Geological Survey of Canada, by F. C. Cooke, 1922. Larder Lake Area, Map No. 37g of the Ontario Department of Mines, by F. E. Hudson, 1924. Geology by Jas. E. Thomson and associates, 1926 and 1929.



**Map No. 50a**  
**TOWNSHIP OF MCGARRY**  
DISTRICT OF TIMISKAMING, ONTARIO

To accompany report by JAS. E. THOMSON in Vol. I, Ontario Department of Mines Annual Report, 1941

