

THESE TERMS GOVERN YOUR USE OF THIS DOCUMENT

Your use of this Ontario Geological Survey document (the “Content”) is governed by the terms set out on this page (“Terms of Use”). By downloading this Content, you (the “User”) have accepted, and have agreed to be bound by, the Terms of Use.

Content: This Content is offered by the Province of Ontario’s *Ministry of Northern Development and Mines* (MNDM) as a public service, on an “as-is” basis. Recommendations and statements of opinion expressed in the Content are those of the author or authors and are not to be construed as statement of government policy. You are solely responsible for your use of the Content. You should not rely on the Content for legal advice nor as authoritative in your particular circumstances. Users should verify the accuracy and applicability of any Content before acting on it. MNDM does not guarantee, or make any warranty express or implied, that the Content is current, accurate, complete or reliable. MNDM is not responsible for any damage however caused, which results, directly or indirectly, from your use of the Content. MNDM assumes no legal liability or responsibility for the Content whatsoever.

Links to Other Web Sites: This Content may contain links, to Web sites that are not operated by MNDM. Linked Web sites may not be available in French. MNDM neither endorses nor assumes any responsibility for the safety, accuracy or availability of linked Web sites or the information contained on them. The linked Web sites, their operation and content are the responsibility of the person or entity for which they were created or maintained (the “Owner”). Both your use of a linked Web site, and your right to use or reproduce information or materials from a linked Web site, are subject to the terms of use governing that particular Web site. Any comments or inquiries regarding a linked Web site must be directed to its Owner.

Copyright: Canadian and international intellectual property laws protect the Content. Unless otherwise indicated, copyright is held by the Queen’s Printer for Ontario.

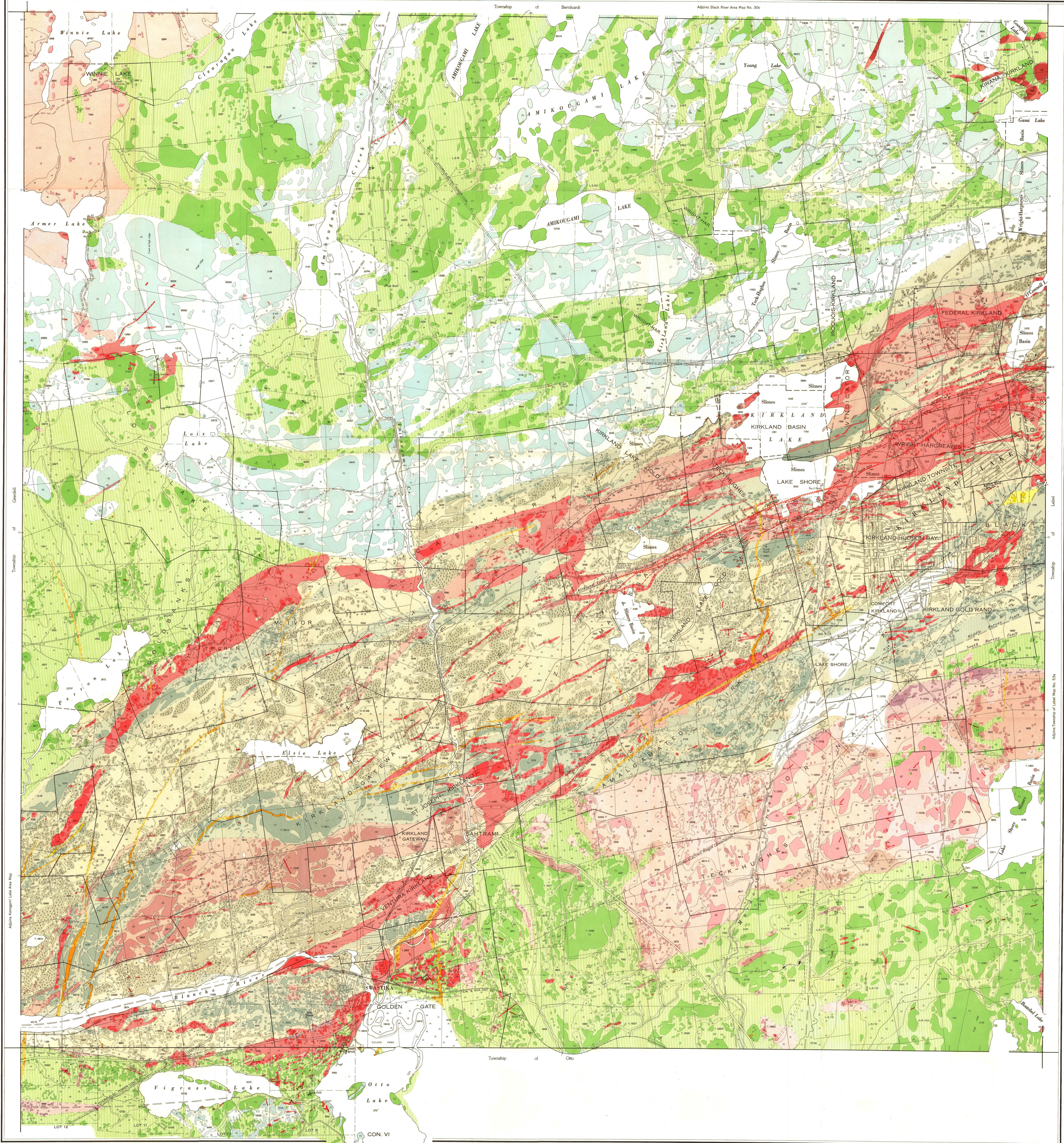
It is recommended that reference to the Content be made in the following form:

<Author’s last name>, <Initials> <year of publication>. <Content title>; Ontario Geological Survey, <Content publication series and number>, <scale>.

Use and Reproduction of Content: The Content may be used and reproduced only in accordance with applicable intellectual property laws. *Non-commercial* use of unsubstantial excerpts of the Content is permitted provided that appropriate credit is given and Crown copyright is acknowledged. Any substantial reproduction of the Content or any *commercial* use of all or part of the Content is prohibited without the prior written permission of MNDM. Substantial reproduction includes the reproduction of any illustration or figure, such as, but not limited to graphs, charts and maps. Commercial use includes commercial distribution of the Content, the reproduction of multiple copies of the Content for any purpose whether or not commercial, use of the Content in commercial publications, and the creation of value-added products using the Content.

Contact:

FOR FURTHER INFORMATION ON	PLEASE CONTACT:	BY TELEPHONE:	BY E-MAIL:
The Reproduction of the EIP or Content	MNDM Publication Services	Local: (705) 670-5691 Toll Free: 1-888-415-9845, ext. 5691 (inside Canada, United States)	Pubsales.ndm@ontario.ca
The Purchase of MNDM Publications	MNDM Publication Sales	Local: (705) 670-5691 Toll Free: 1-888-415-9845, ext. 5691 (inside Canada, United States)	Pubsales.ndm@ontario.ca
Crown Copyright	Queen’s Printer	Local: (416) 326-2678 Toll Free: 1-800-668-9938 (inside Canada, United States)	Copyright@gov.on.ca



SYMBOLS

- Higher ground
- Swamp
- Railway
- Electric power transmission line
- Elevation in feet above sea level
- City's Highway, with number
- Dist. Highway, right of way not set out
- Motor road
- Wagon road, water road
- Trail or path
- Glacial striae
- Geological boundary defined
- Geological boundary, approximate
- Geological boundary, assumed
- Boundary of rock strata
- Strike and dip of beds
- Strike and vertical dip of beds
- Strike and dip of schistosity
- Strike of schistosity or cleavage
- Strike and vertical dip of schistosity
- Direction in which beds have been tilted or warped in situ
- Direction in which beds have been tilted or warped, dip or direction of the face
- Chartered land. Strike face in direction of strike, dip or direction of face
- Sliver area line
- Shale
- Diamond-drill hole, horizontal projection
- Artificial
- Shale
- Shale art.
- Shale defined
- Shale assumed
- Shaded area
- Artificial area
- Pitch of axis of fold
- Almsing claim boundary
- Property boundary
- Provisional portion of water divided area (shown only if not protected by law)
- Mean. Provisional water area (shown only if not protected by law)

LEGEND

QUATERNARY

PLEISTOCENE

- Q1. Recent alluvium. Thick deposits of sand, silt and gravel.
- Q2. Older alluvium. Thin deposits of sand, silt and gravel.
- GREAT UNCONFORMITY

PRE-CAMBRIAN

POSTALGOMAN

- A1. Quartzite, quartzite and quartzite schist.
- A2. Quartzite.
- A3. Basaltic, andesitic and dioritic rocks.
- A4. Hornblende, quartzite, diorite.
- A5. Granite.
- A6. Gneiss and schist, quartzite and schist.
- A7. Diorite and gneiss, quartzite and schist.

INTRUSIVE CONTACT

TIMISKAMING

- T1. Tuff and tuffaceous sandstone.
- T2. Tuffaceous sandstone.
- T3. Conglomerate.
- T4. Quartzite.
- T5. Basalt and andesite.

GREAT UNCONFORMITY

KEEWATIN

- K1. Tuff and iron formation.
- K2. Altered iron schist.
- K3. Iron schist and iron schist (Gneiss).
- Ck. Carbonated rock or "cherty"

Some of the narrow bands indicated on the map were not mapped in detail.

The heavier colors on the map indicate rock units. The lighter colors indicate the relative position of geological formations. In uncolored areas no geological formations have been mapped.

SOURCE OF INFORMATION

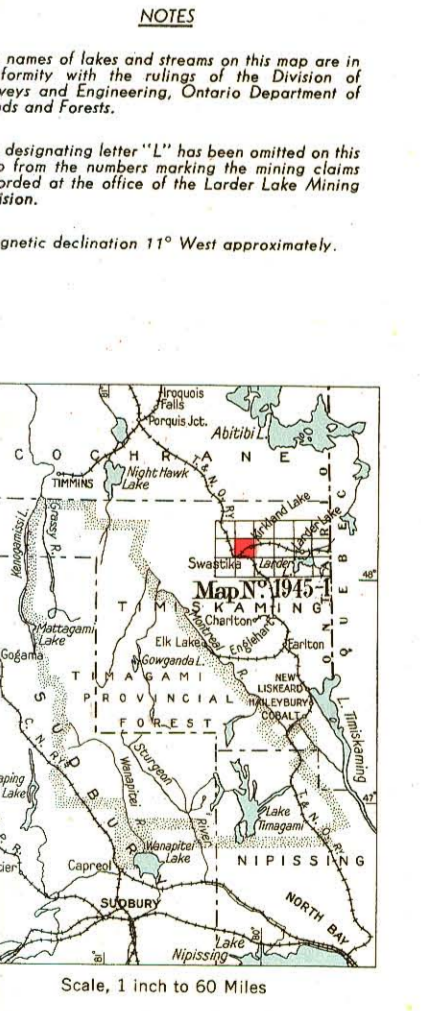
Map No. 1945-1 is a revision of the original map of the Township of Teck, Ontario, District of Timiskaming, prepared by the Department of Mines, Province of Ontario, in 1937 and 1938.

Geological map of Ontario, Province of Ontario, prepared by the Department of Mines, Province of Ontario, in 1937 and 1938.

Additional geological maps of the Township of Teck, Ontario, District of Timiskaming, prepared by the Department of Mines, Province of Ontario, in 1937 and 1938.

Additional geological maps of the Township of Teck, Ontario, District of Timiskaming, prepared by the Department of Mines, Province of Ontario, in 1937 and 1938.

Consent for publication by J. E. Thomson, 1945 and 1946.



Map No. 1945-1
TOWNSHIP OF TECK
DISTRICT OF TIMISKAMING, ONTARIO

Scale 1/32000 or 1 inch to 1,000 Feet