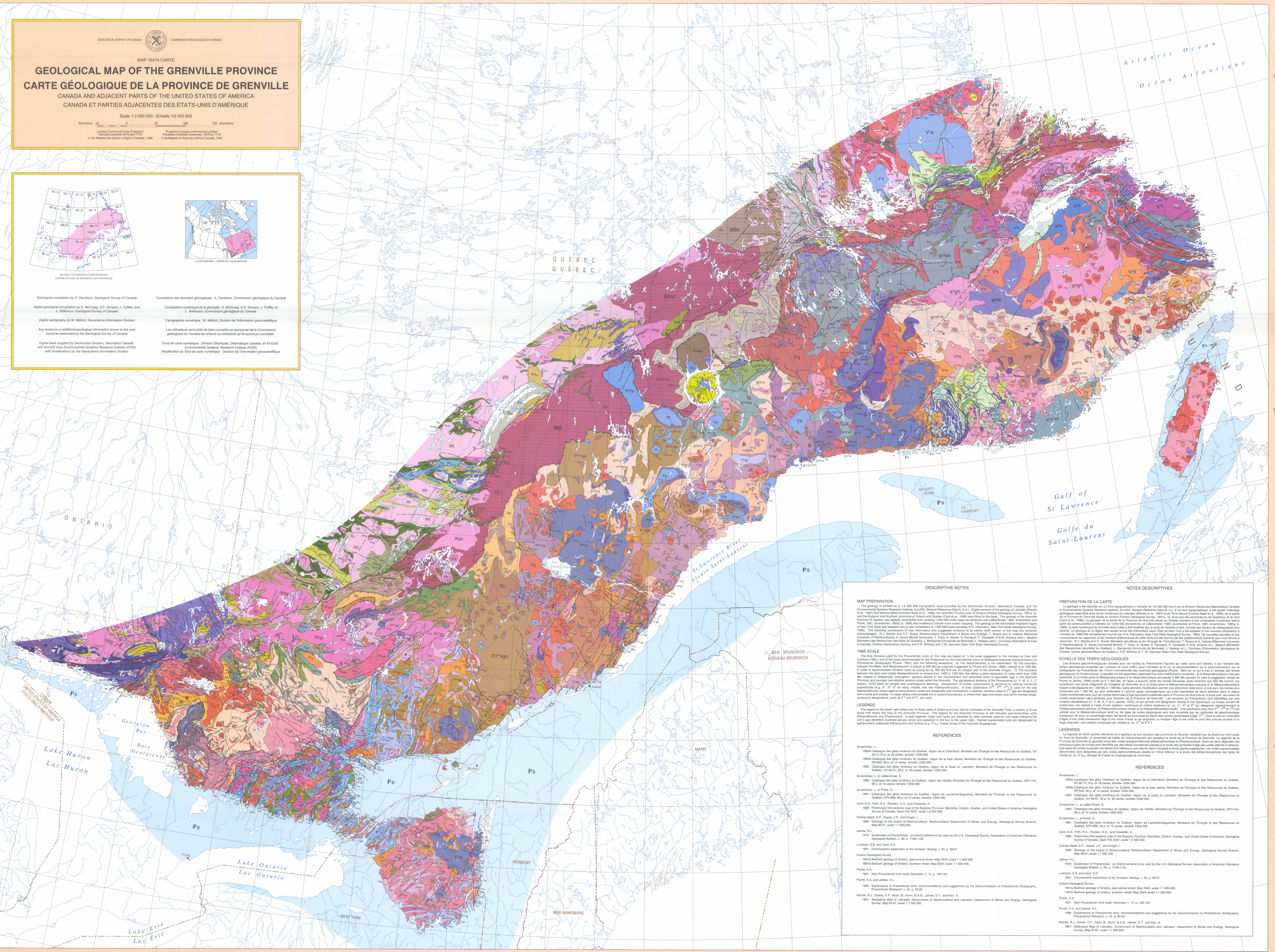


Map title and metadata: GEOLOGICAL MAP OF THE GRENVILLE PROVINCE, CARTE GÉOLOGIQUE DE LA PROVINCE DE GRENVILLE, CANADA AND ADJACENT PARTS OF THE UNITED STATES OF AMERICA. Scale 1:2 000 000 - Echelle 1:2 000 000. Includes logos for Geological Survey of Canada and Commission géologique du Canada.

Map navigation and technical details: Includes a locator map, National Geographic Coordinates, and credits for geological compilation and digital cartography.



DESCRIPTIVE NOTES / NOTES DESCRIPTIVES: MAP PREPARATION, TIME SCALE, LEGENDS, and REFERENCES. Provides detailed information about the map's preparation, geological time scale, legend symbols, and sources of geological data.

Small text at the bottom left corner: "This map has been produced from a scanned version of the original map..."

Handwritten number: 1947A