

First edition / Première édition
 Scale / Echelle 1:1 000 000
 Equidistant conic projection / Projecteur conique équidistant



Sub-commission for Magmatic and Metamorphic Maps
 Sous-commission des Cartes Magmatiques et Métamorphiques
 President / Président: Roland OBERHÄNSLI

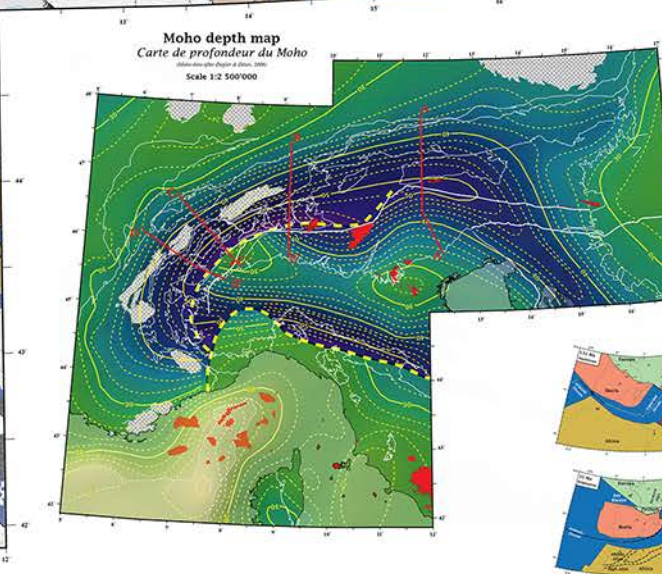
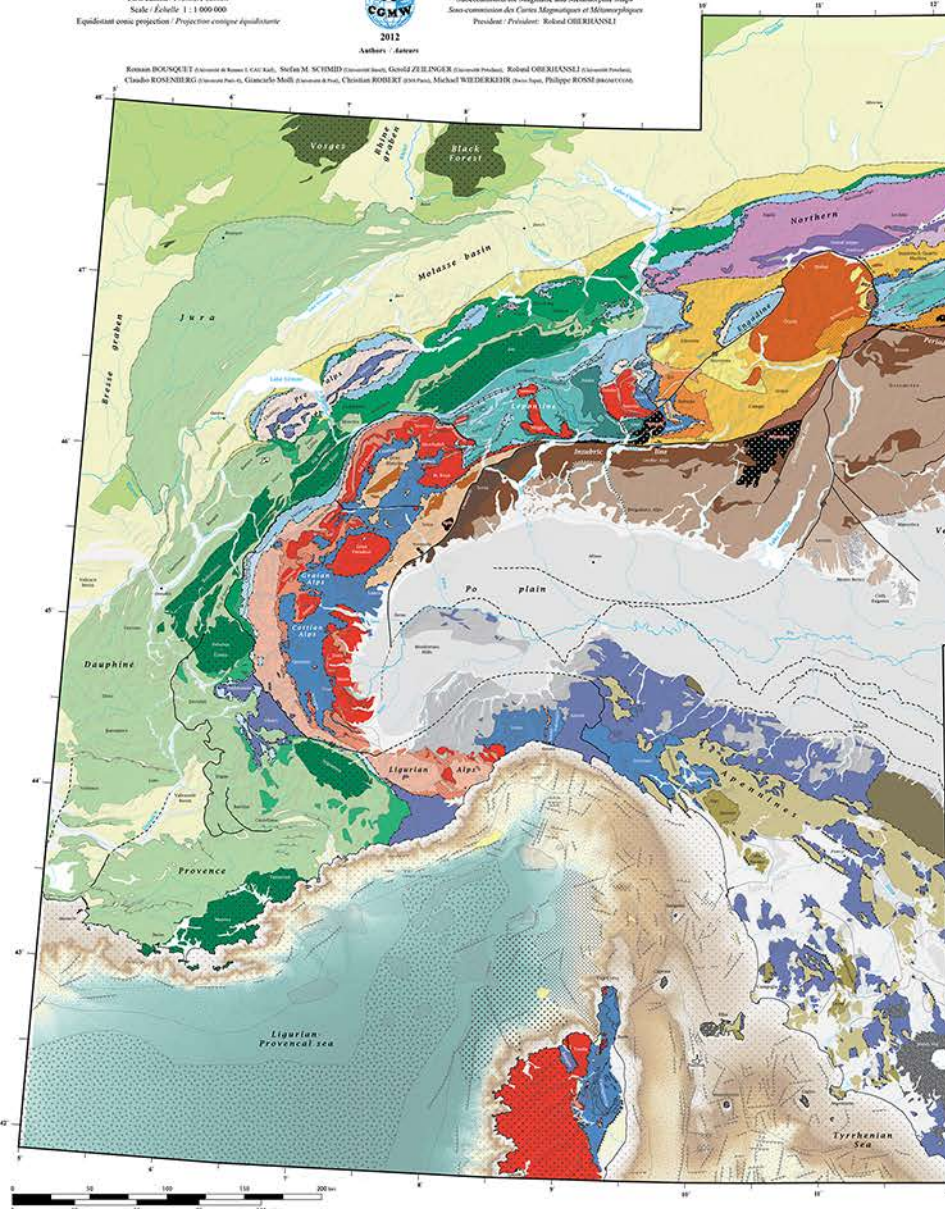
President / Président: Philippe BODRE
 Secretary General / Secrétaire Général: Manuel PUELLER

Edouard BOCQUET (President of the Commission), Stefan M. SCHMID (President Emeritus), Gerald ZIEGLER (President Emeritus), Roland OBERHÄNSLI (President Emeritus), Claudio RONCHI (President Emeritus), Giancarlo Molli (President Emeritus), Christian ROBERT (President Emeritus), Michael WIEDERKEH (President Emeritus), Philippe BODRE (President Emeritus)

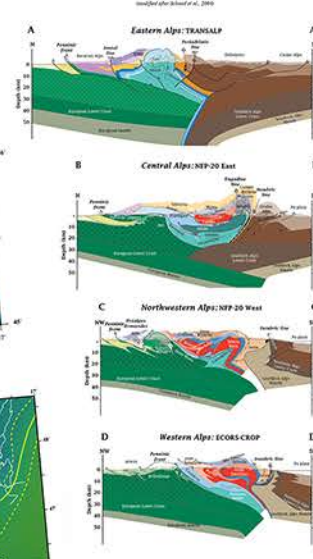
2012
 Authors / Auteurs



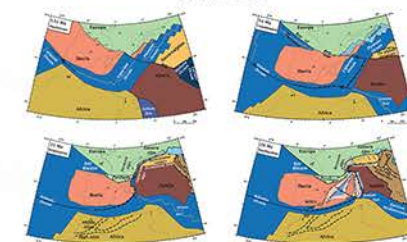
Thanks to / Remerciements:
 Michel Balavoie (Université de Rennes 2), Bernhard Paganobelli (Université Innsbruck), Mark Handy (Free University Berlin), Didier Manger (Université de Franche-Comté), Anders Scharf (Free University Berlin), Ralf Schärer (Geologische Bundesanstalt, Wien), A. Kaul (Université IGF Potsdam)
 ICDP-ASG
 G. Zellinger (Université Potsdam) & Thomas Delaunay (Université Potsdam)
 Spatial reference GCS WGS 84 - Relief generated from SRTM 90m elevation data by CGMW-CSI - Bathymetry BATHY data generated using Geomapp



Cross-sections



Paleogeography



European Continent
 Helvetic nappes and Northern Alpine Foreland
 - Helvetic nappes: Helvetic nappes of the Alpine foreland (Helvetic, Jura, Briançonnais, etc.)
 - Northern Alpine Foreland: Northern Alpine Foreland (Danubian, etc.)

Alpine belts
 Valais Ocean and related rocks
 - Chert Top: Valais Ocean
 - Valais Ocean: Valais Ocean
 - Valais Ocean: Valais Ocean
 - Valais Ocean: Valais Ocean
 - Valais Ocean: Valais Ocean

Adriatic margin, Noveltis and autochthonous Adriatic nappes
 - Lower Austroalpine nappes: Lower Austroalpine nappes
 - Upper Austroalpine nappes: Upper Austroalpine nappes
 - Northern Calcareous Alps and Grauwacken: Northern Calcareous Alps and Grauwacken
 - Southern Alps and autochthonous Adria nappes: Southern Alps and autochthonous Adria nappes

Dinarides
 - Dinarides: Dinarides
 - Dinarides: Dinarides
 - Dinarides: Dinarides
 - Dinarides: Dinarides

Phanerozoic sedimentary basins
 - Basins: Basins
 - Basins: Basins
 - Basins: Basins
 - Basins: Basins

Magmatic rocks
 - Magmatic rocks: Magmatic rocks
 - Magmatic rocks: Magmatic rocks
 - Magmatic rocks: Magmatic rocks
 - Magmatic rocks: Magmatic rocks

Tectonic contacts
 - Tectonic contacts: Tectonic contacts
 - Tectonic contacts: Tectonic contacts
 - Tectonic contacts: Tectonic contacts
 - Tectonic contacts: Tectonic contacts